

| Detail Ref. | Detail Title |
|-------------|--|
| HH-PF-01 | External Masonry Cavity Wall, Partial-Fill - Suspended Beam And Block Floor, Insulation Above Slab |
| HH-PF-02 | External Masonry Cavity Wall, Partial-Fill - Suspended In-Situ Concrete Floor, Insulation Below Slab |
| HH-PF-03 | External Masonry Cavity Wall, Partial-Fill - Concrete Ground Bearing Floor, Insulation Below Slab |
| HH-PF-04 | External Masonry Cavity Wall, Partial-Fill - Independent Lintel |
| HH-PF-05 | External Masonry Cavity Wall, Partial-Fill - Steel Lintel, Perforated Base Plate, (Insulated Soffit) |
| HH-PF-22 | External Masonry Cavity Wall, Partial-Fill - Steel Lintel, Open Back (no continuous base plate) |
| HH-PF-26 | External Masonry Cavity Wall, Partial-Fill - Catnic Thermally Broken Lintel |
| HH-PF-27 | External Masonry Cavity Wall, Partial-Fill - Hi-Therm+ Thermally Broken Lintel |
| HH-PF-06 | External Masonry Cavity Wall, Partial-Fill - Sill |
| HH-PF-07 | External Masonry Cavity Wall, Partial-Fill - Jamb |
| HH-PF-08 | External Masonry Cavity Wall, Partial-Fill - Intermediate Timber Floor Within A Dwelling |
| HH-PF-25 | External Masonry Cavity Wall, Partial-Fill - Intermediate Timber Floor, Insulated (over exposed area) |
| HH-PF-09 | External Masonry Cavity Wall, Partial-Fill - Precast Concrete Separating Floor Between Dwellings |
| HH-PF-10 | External Masonry Cavity Wall, Partial-Fill - Pitched Roof, Gable, Insulation At Ceiling Level, Ventilated Loft |
| HH-PF-11 | External Masonry Cavity Wall, Partial-Fill - Pitched Roof, Gable, Insulation At Rafter Level, Unventilated Rafter Void |
| HH-PF-12 | External Masonry Cavity Wall, Partial-Fill - Pitched Roof, Eaves, Insulation At Ceiling Level, Ventilated Loft |
| HH-PF-13 | External Masonry Cavity Wall, Partial-Fill - Pitched Roof, Eaves, Insulation At Rafter Level, Unventilated Rafter Void |
| HH-PF-23 | External Masonry Cavity Wall, Partial-Fill - Pitched Roof, Eaves, Insulation At Rafter Level, Unventilated Rafter Void |
| HH-PF-14 | External Masonry Cavity Wall, Partial-Fill - Normal Corner |
| HH-PF-15 | External Masonry Cavity Wall, Partial-Fill - Inverted Corner |
| HH-PF-16 | External Masonry Cavity Wall, Partial-Fill - Party Wall Between Dwellings |
| HH-PF-24 | External Masonry Cavity Wall, Partial Fill - Staggered External (flanking) Wall Junction |
| HH-PW-17 | Party Wall Masonry, Full Fill - Suspended Beam And Block Floor, Insulation Above Slab |
| HH-PW-18 | Party Wall Masonry, Full Fill - Suspended Concrete Floor, Insulation Below Slab |
| HH-PW-19 | Party Wall Masonry, Full Fill - In-Situ Concrete Ground Bearing Floor, Insulation Below Slab |
| HH-PW-20 | Party Wall Masonry, Full Fill - Roof, Insulation At Ceiling Level, Ventilated Loft |
| HH-PW-21 | Party Wall Masonry, Full Fill - Roof, Insulation At Rafter Level, Unventilated Rafter Void |

| REV. | DATE. | DESCRIPTION. | BY. |
|------|---------|--|-----|
| D | 08/2023 | REFERENCES TO CONSTRUCTIVE AND REGISTERED CONSTRUCTION DETAILS REMOVED. HH-PF-27 ADDED. INSULATION REVISED FOR HH-PF-10 & 20 | SJB |
| C | 04/2021 | HH-PF-24, HH-PF-25 & HH-PF-26 ADDED TO INDEX | SJB |
| B | 11/2014 | HH-PF-22 & HH-PF-23 ADDED | SJB |
| A | 11/2013 | NOTES ADDED TO DETAILS 01, 02, 03, 11, 12, 13, 17, 18, 19 AND 21 | SJB |

These details have been produced for guidance only. It is the responsibility of the building designer to ensure that the details shown are compatible with the overall building design and will satisfy the relevant parts of the Building Regulations applicable before they are adopted into the project design.



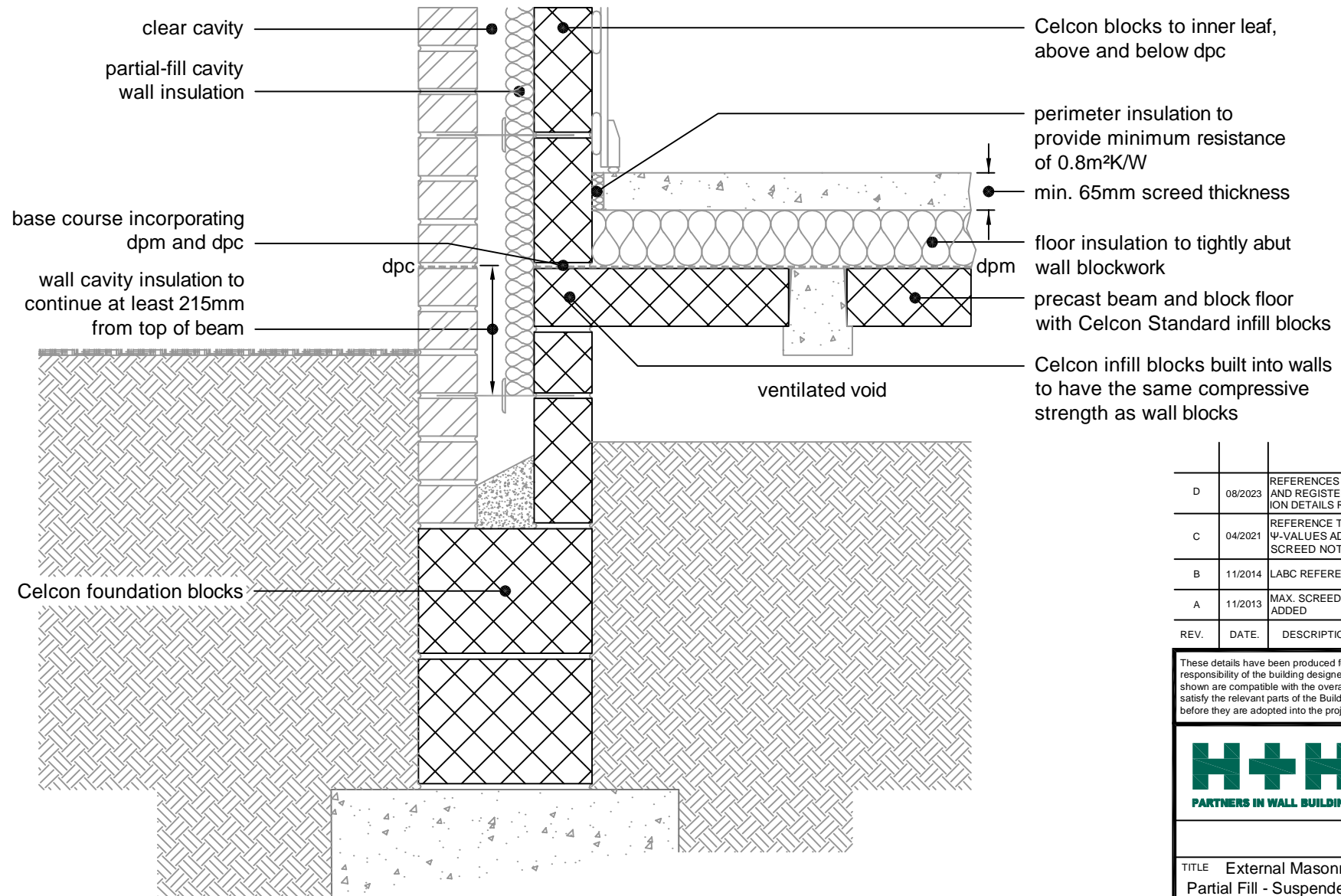
H+H UK Limited
 Technical Services Dept.
 Celcon House
 Igham, Sevenoaks
 Kent, TN15 9HZ
 Tel +44 (0)1732 880580
 Fax +44 (0)1732 887013
 Email tsd@hhcelcon.co.uk

TITLE **Standard Junction Details
(Partial Fill)**

DWG No. **INDEX**

DRAWN BY **SJB** CHECKED BY **AHR**

DATE **Nov 2012** SCALE **N.T.S.** REV.NO. **D**



| D | 08/2023 | REFERENCES TO CONSTRUCTIVE AND REGISTERED CONSTRUCTION DETAILS REMOVED | SJB |
|------|---------|--|-----|
| C | 04/2021 | REFERENCE TO H+H CALCULATED Ψ-VALUES ADDED SCREED NOTE REVISED | SJB |
| B | 11/2014 | LABC REFERENCE ADDED | SJB |
| A | 11/2013 | MAX. SCREED THICKNESS NOTE ADDED | SJB |
| REV. | DATE. | DESCRIPTION. | BY. |

These details have been produced for guidance only. It is the responsibility of the building designer to ensure that the details shown are compatible with the overall building design and will satisfy the relevant parts of the Building Regulations applicable before they are adopted into the project design.



H+H UK Limited
 Technical Services Dept.
 Celcon House
 Ightham, Sevenoaks
 Kent, TN15 9HZ
 Tel +44 (0)1732 880580
 Fax +44 (0)1732 887013
 Email tsd@hhcelcon.co.uk

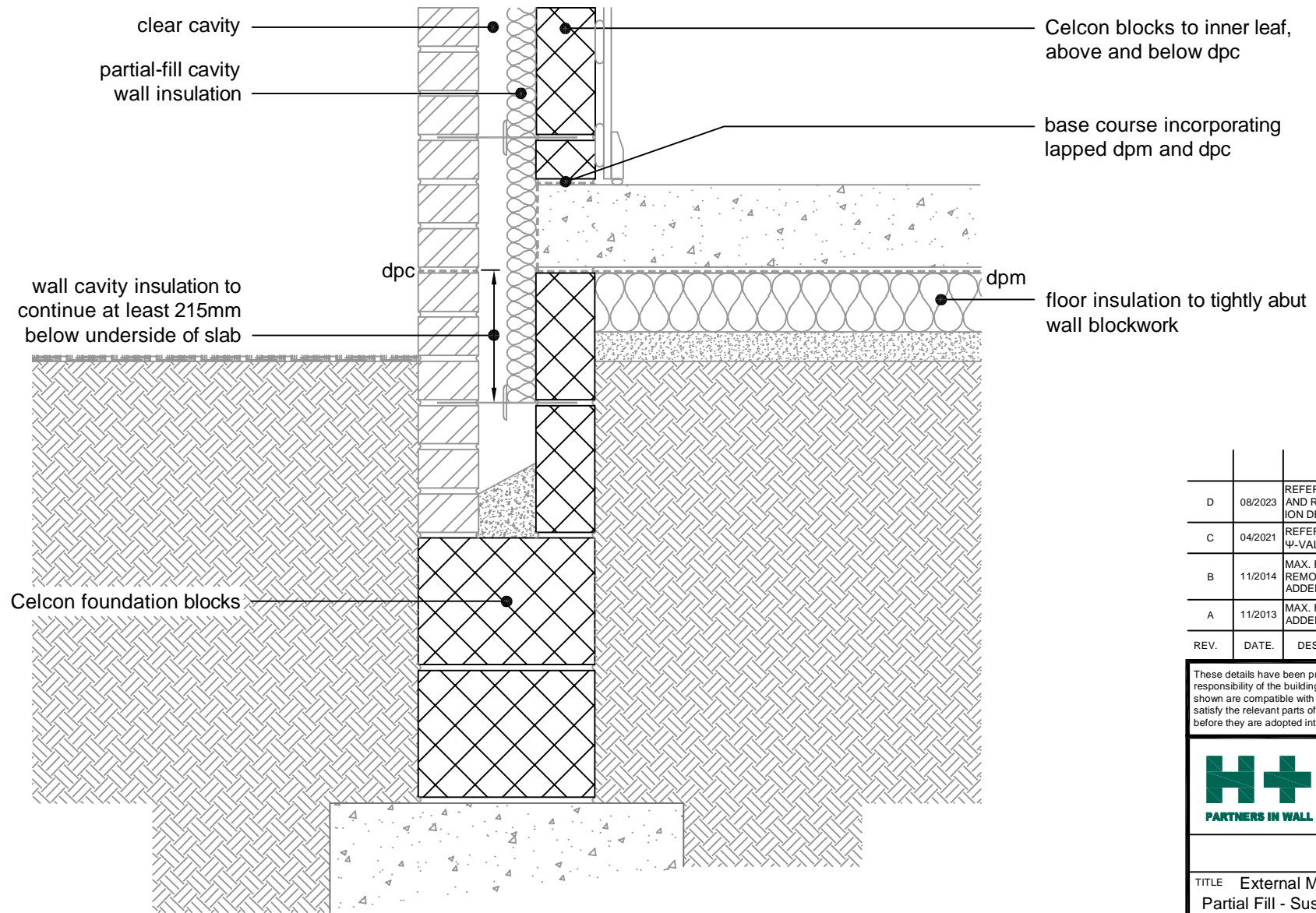
TITLE External Masonry Cavity Wall,
 Partial Fill - Suspended Beam And Block
 Floor, Insulation Above Slab

DWG No. HH-PF-01

DRAWN BY SJB CHECKED BY AHR

DATE Nov 2012 SCALE 1:100 @ A4 REV. NO. D

This junction detail has been assessed by H+H UK Ltd. for thermal performance based on various Celcon blocks and insulation combinations. Applicable Ψ-values and minimum temperature factors compatible with the latest Building Regulations can be found in our 'H+H Calculated Ψ-values' document, available to download from our website www.hhcelcon.co.uk.



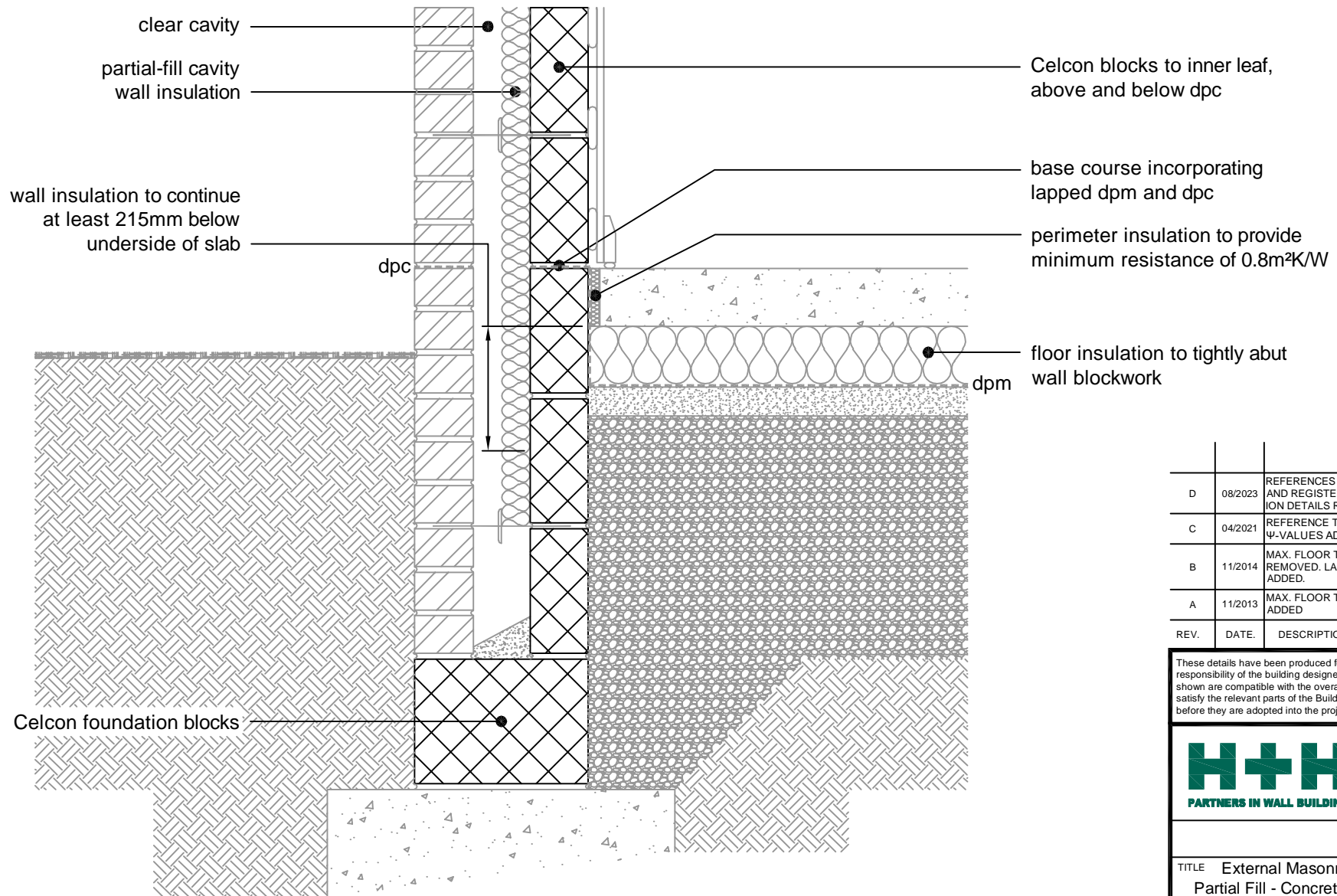
| REV. | DATE. | DESCRIPTION. | BY. |
|------|---------|--|-----|
| D | 08/2023 | REFERENCES TO CONSTRUCTIVE AND REGISTERED CONSTRUCTION DETAILS REMOVED | SJB |
| C | 04/2021 | REFERENCE TO H+H CALCULATED Ψ -VALUES ADDED | SJB |
| B | 11/2014 | MAX. FLOOR THICKNESS NOTE REMOVED. LABC REFERENCE ADDED. | SJB |
| A | 11/2013 | MAX. FLOOR THICKNESS NOTE ADDED | SJB |

These details have been produced for guidance only. It is the responsibility of the building designer to ensure that the details shown are compatible with the overall building design and will satisfy the relevant parts of the Building Regulations applicable before they are adopted into the project design.


H+H UK Limited
 Technical Services Dept.
 Celcon House
 Ightham, Sevenoaks
 Kent, TN15 9HZ.
 Tel +44 (0)1732 880580
 Fax +44 (0)1732 887013
 Email tsd@hhcelcon.co.uk

| | | |
|--|------------------|-----------|
| TITLE External Masonry Cavity Wall, Partial Fill - Suspended In-Situ Concrete Floor, Insulation Below Slab | | |
| DWG No. HH-PF-02 | | |
| DRAWN BY SJB | CHECKED BY AHR | |
| DATE Nov 2012 | SCALE 1:100 @ A4 | REV.NO. D |

This junction detail has been assessed by H+H UK Ltd. for thermal performance based on various Celcon blocks and insulation combinations. Applicable Ψ -values and minimum temperature factors compatible with the latest Building Regulations can be found in our 'H+H Calculated Ψ -values' document, available to download from our website www.hhcelcon.co.uk.



| REV. | DATE. | DESCRIPTION. | BY. |
|------|---------|--|-----|
| D | 08/2023 | REFERENCES TO CONSTRUCTIVE AND REGISTERED CONSTRUCTION DETAILS REMOVED | SJB |
| C | 04/2021 | REFERENCE TO H+H CALCULATED Ψ-VALUES ADDED | SJB |
| B | 11/2014 | MAX. FLOOR THICKNESS NOTE REMOVED. LABC REFERENCE ADDED. | SJB |
| A | 11/2013 | MAX. FLOOR THICKNESS NOTE ADDED | SJB |

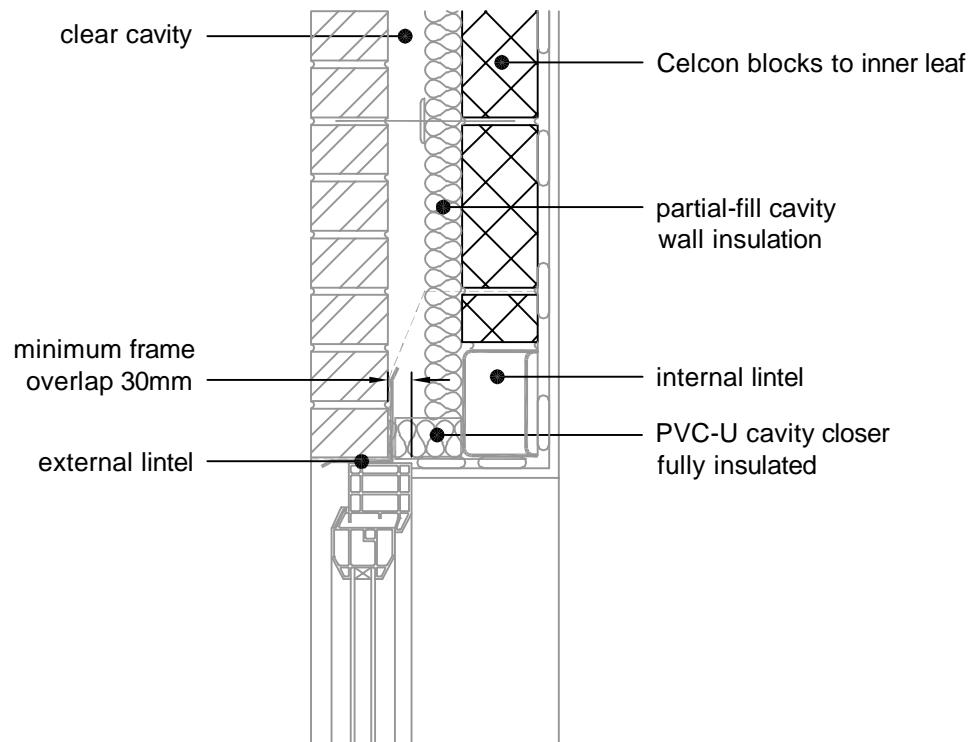
These details have been produced for guidance only. It is the responsibility of the building designer to ensure that the details shown are compatible with the overall building design and will satisfy the relevant parts of the Building Regulations applicable before they are adopted into the project design.



H+H UK Limited
 Technical Services Dept.
 Celcon House
 Ightham, Sevenoaks
 Kent, TN15 9HZ
 Tel +44 (0)1732 880580
 Fax +44 (0)1732 887013
 Email tsd@hhcelcon.co.uk

| | | |
|---|------------------|-----------|
| TITLE External Masonry Cavity Wall, Partial Fill - Concrete Ground Bearing Floor, Insulation Below Slab | | |
| DWG No. HH-PF-03 | | |
| DRAWN BY SJB | CHECKED BY AHR | |
| DATE Nov 2012 | SCALE 1:100 @ A4 | REV.No. D |

This junction detail has been assessed by H+H UK Ltd. for thermal performance based on various Celcon blocks and insulation combinations. Applicable Ψ-values and minimum temperature factors compatible with the latest Building Regulations can be found in our 'H+H Calculated Ψ-values' document, available to download from our website www.hhcelcon.co.uk.



| REV. | DATE. | DESCRIPTION. | BY. |
|------|---------|--|-----|
| C | 08/2023 | REFERENCES TO CONSTRUCTIVE AND REGISTERED CONSTRUCTION DETAILS REMOVED | SJB |
| B | 04/2021 | REFERENCE TO H+H CALCULATED Ψ -VALUES ADDED | SJB |
| A | 11/2014 | LABC NOTE ADDED | SJB |

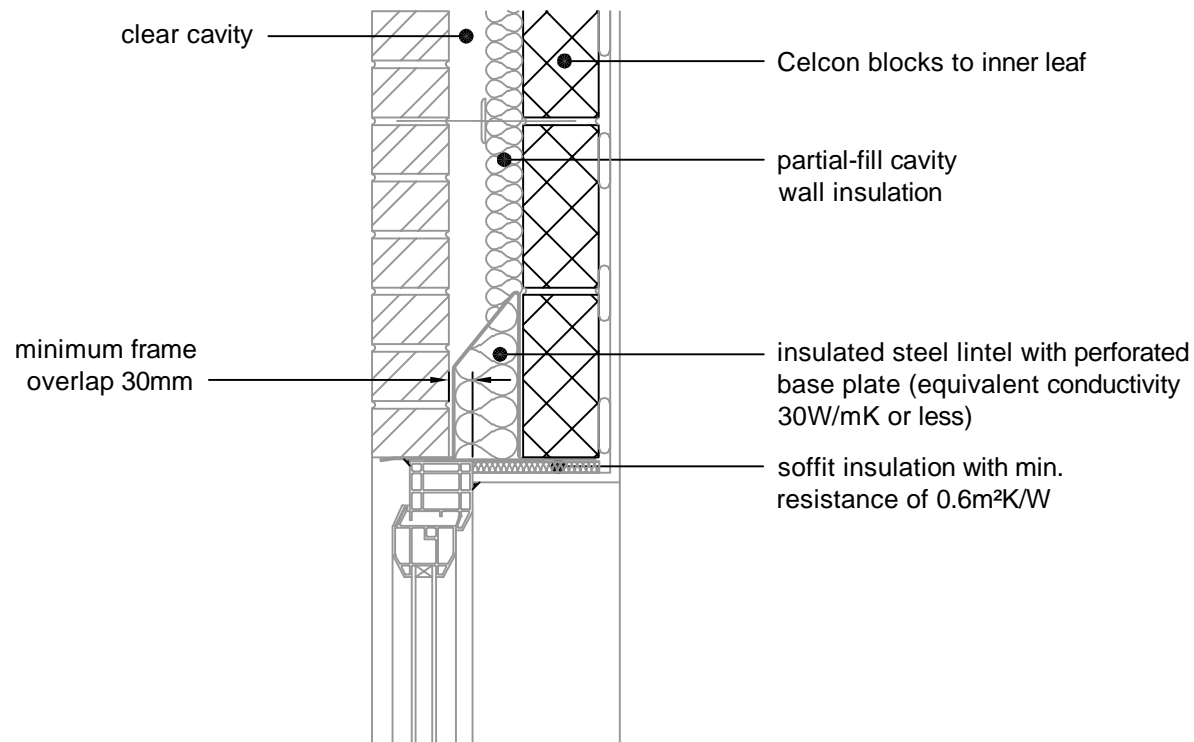
These details have been produced for guidance only. It is the responsibility of the building designer to ensure that the details shown are compatible with the overall building design and will satisfy the relevant parts of the Building Regulations applicable before they are adopted into the project design.



H+H UK Limited
 Technical Services Dept.
 Celcon House
 Ightham, Sevenoaks
 Kent, TN15 9HZ.
 Tel +44 (0)1732 880580
 Fax +44 (0)1732 887013
 Email tsd@hhcelcon.co.uk

| | | |
|--|----------|------------------|
| TITLE | | |
| External Masonry Cavity Wall, Partial Fill - Independent Lintel | | |
| DWG No. HH-PF-04 | | |
| DRAWN BY | SJB | CHECKED BY AHR |
| DATE | Nov 2012 | SCALE 1:100 @ A4 |
| REV. NO. | C | |

This junction detail has been assessed by H+H UK Ltd. for thermal performance based on various Celcon blocks and insulation combinations. Applicable Ψ -values and minimum temperature factors compatible with the latest Building Regulations can be found in our 'H+H Calculated Ψ -values' document, available to download from our website www.hhcelcon.co.uk.



| REV. | DATE | DESCRIPTION | BY. |
|------|---------|---|-----|
| C | 08/2023 | REFERENCES TO CONSTRUCTIVE AND REGISTERED CONSTRUCTION DETAILS REMOVED | SJB |
| B | 04/2021 | REFERENCE TO H+H CALCULATED Ψ-VALUES ADDED | SJB |
| A | 11/2014 | MAX. LINTEL HEIGHT NOTE REMOVED. LINTEL BASEPLATE ADDED. LABC REFERENCE ADDED | SJB |

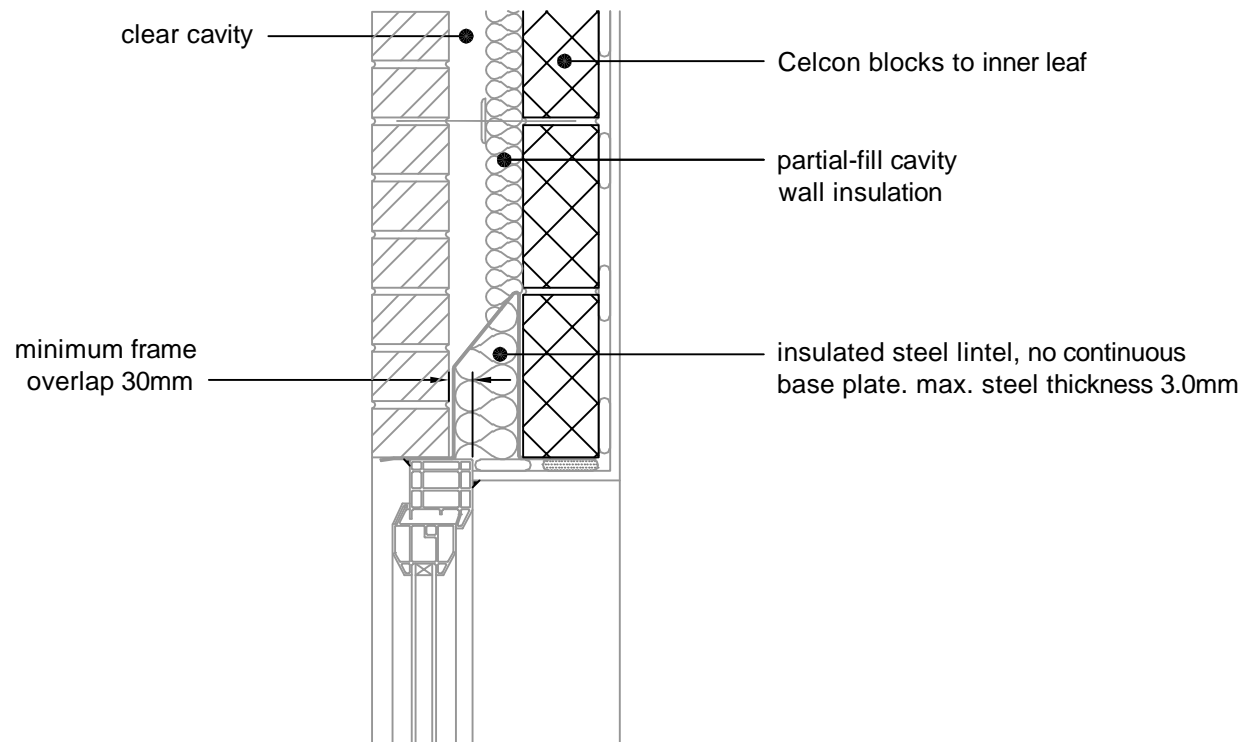
These details have been produced for guidance only. It is the responsibility of the building designer to ensure that the details shown are compatible with the overall building design and will satisfy the relevant parts of the Building Regulations applicable before they are adopted into the project design.



H+H UK Limited
 Technical Services Dept.
 Celcon House
 Ightham, Sevenoaks
 Kent, TN15 9HZ.
 Tel +44 (0)1732 880580
 Fax +44 (0)1732 887013
 Email tsd@hhcelcon.co.uk

| | | |
|--|------------|----------|
| TITLE | | |
| External Masonry Cavity Wall, Partial Fill - Steel Lintel, Perforated Base Plate, (Insulated Soffit) | | |
| DWG No. HH-PF-05 | | |
| DRAWN BY | CHECKED BY | |
| SJB | AHR | |
| DATE | SCALE | REV. NO. |
| Nov 2012 | 1:100 @ A4 | C |

This junction detail has been assessed by H+H UK Ltd. for thermal performance based on various Celcon blocks and insulation combinations. Applicable Ψ-values and minimum temperature factors compatible with the latest Building Regulations can be found in our 'H+H Calculated Ψ-values' document, available to download from our website www.hhcelcon.co.uk.



| REV. | DATE | DESCRIPTION | BY. |
|------|---------|--|-----|
| B | 08/2023 | REFERENCES TO CONSTRUCTIVE AND REGISTERED CONSTRUCTION DETAILS REMOVED | SJB |
| A | 04/2021 | REFERENCE TO H+H CALCULATED Ψ -VALUES ADDED | SJB |

These details have been produced for guidance only. It is the responsibility of the building designer to ensure that the details shown are compatible with the overall building design and will satisfy the relevant parts of the Building Regulations applicable before they are adopted into the project design.



H+H UK Limited
 Technical Services Dept.
 Celcon House
 Ightham, Sevenoaks
 Kent, TN15 9HZ.
 Tel +44 (0)1732 880580
 Fax +44 (0)1732 887013
 Email tsd@hhcelcon.co.uk

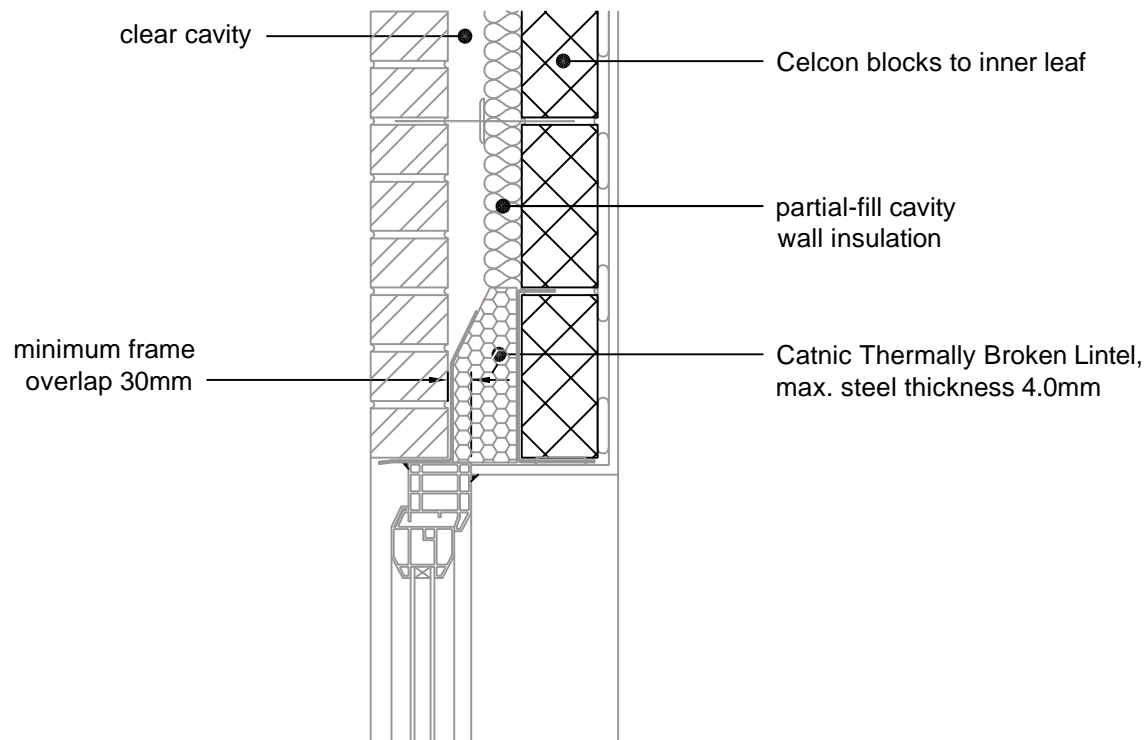
TITLE External Masonry Cavity Wall,
 Partial Fill - Steel Lintel, Open back
 (no continuous base plate)

DWG No. HH-PF-22

DRAWN BY SJB CHECKED BY AHR

DATE Nov 2014 SCALE 1:100 @ A4 REV.NO. B

This junction detail has been assessed by H+H UK Ltd. for thermal performance based on various Celcon blocks and insulation combinations. Applicable Ψ -values and minimum temperature factors compatible with the latest Building Regulations can be found in our 'H+H Calculated Ψ -values' document, available to download from our website www.hhcelcon.co.uk.



| REV. | DATE. | DESCRIPTION. | BY. |
|------|---------|--|-----|
| A | 08/2023 | REFERENCES TO CONSTRUCTIVE AND REGISTERED CONSTRUCTION DETAILS REMOVED | SJB |

These details have been produced for guidance only. It is the responsibility of the building designer to ensure that the details shown are compatible with the overall building design and will satisfy the relevant parts of the Building Regulations applicable before they are adopted into the project design.



H+H UK Limited
 Technical Services Dept.
 Celcon House
 Ightham, Sevenoaks
 Kent, TN15 9HZ
 Tel +44 (0)1732 880580
 Fax +44 (0)1732 887013
 Email tsd@hhcelcon.co.uk

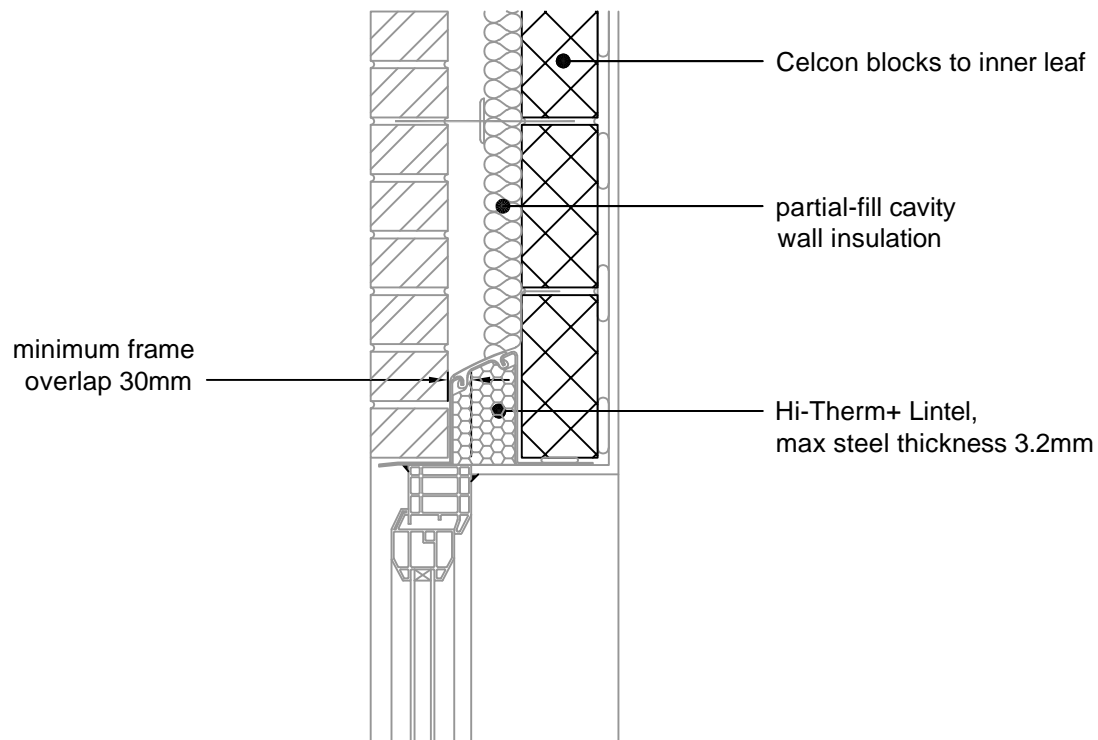
TITLE External Masonry Cavity Wall,
 Partial Fill - Catnic
 Thermally Broken Lintel

DWG No. HH-PF-26

DRAWN BY SJB CHECKED BY AHR

DATE Apr 2021 SCALE 1:100 @ A4 REV.NO. A

This junction detail has been assessed by H+H UK Ltd. for thermal performance based on various Celcon blocks and insulation combinations. Applicable Ψ -values and minimum temperature factors compatible with the latest Building Regulations can be found in our 'H+H Calculated Ψ -values' document, available to download from our website www.hhcelcon.co.uk.



| REV. | DATE. | DESCRIPTION. | BY. |
|------|-------|--------------|-----|
| | | | |

These details have been produced for guidance only. It is the responsibility of the building designer to ensure that the details shown are compatible with the overall building design and will satisfy the relevant parts of the Building Regulations applicable before they are adopted into the project design.



H+H UK Limited
 Technical Services Dept.
 Celcon House
 Ightham, Sevenoaks
 Kent, TN15 9HZ
 Tel +44 (0)1732 880580
 Fax +44 (0)1732 887013
 Email tsd@hhcelcon.co.uk

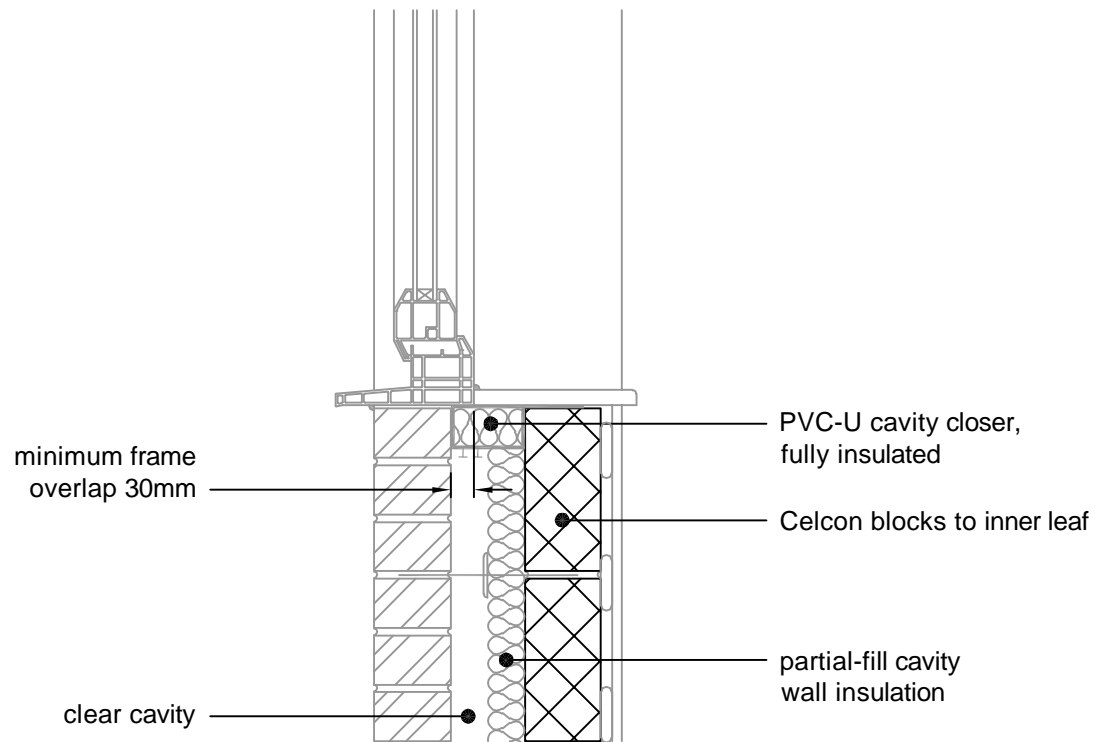
TITLE External Masonry Cavity Wall,
 Partial Fill - Hi-Therm+
 Thermally Broken Lintel

DWG No. HH-PF-27

DRAWN BY SJB CHECKED BY AHR

DATE Aug 2023 SCALE 1:100 @ A4 REV.NO. 0

This junction detail has been assessed by H+H UK Ltd. for thermal performance based on various Celcon blocks and insulation combinations. Applicable Ψ -values and minimum temperature factors compatible with the latest Building Regulations can be found in our 'H+H Calculated Ψ -values' document, available to download from our website www.hhcelcon.co.uk.



| REV. | DATE | DESCRIPTION | BY. |
|------|---------|--|-----|
| C | 08/2023 | REFERENCES TO CONSTRUCTIVE AND REGISTERED CONSTRUCTION DETAILS REMOVED | SJB |
| B | 04/2021 | REFERENCE TO H+H CALCULATED Ψ -VALUES ADDED | SJB |
| A | 11/2014 | LABC NOTE ADDED | SJB |

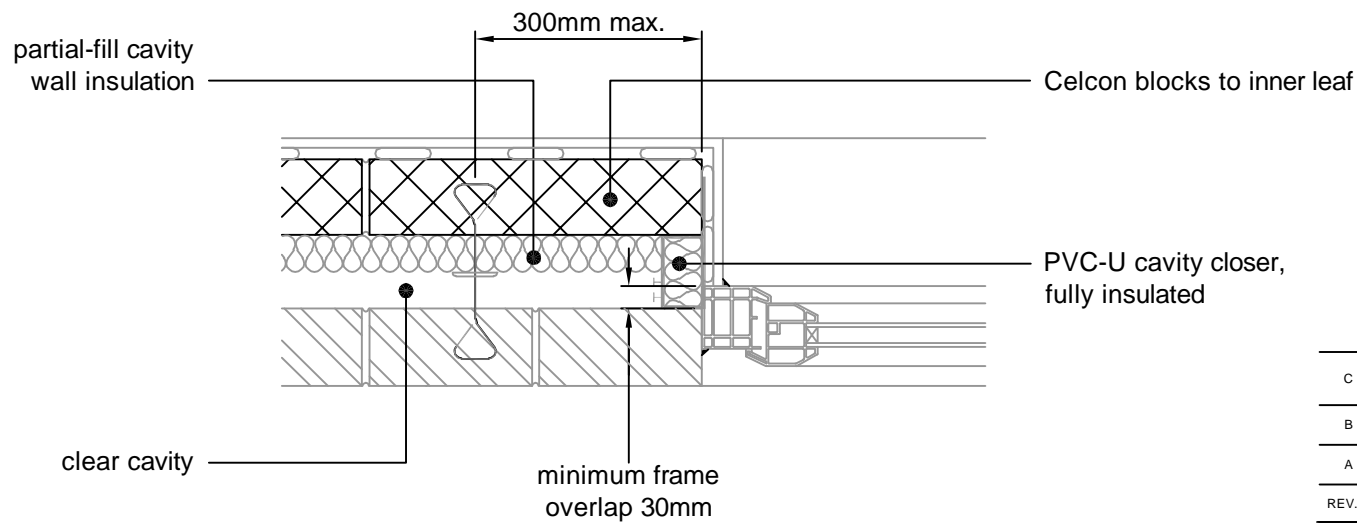
These details have been produced for guidance only. It is the responsibility of the building designer to ensure that the details shown are compatible with the overall building design and will satisfy the relevant parts of the Building Regulations applicable before they are adopted into the project design.



H+H UK Limited
 Technical Services Dept.
 Celcon House
 Ightham, Sevenoaks
 Kent, TN15 9HZ.
 Tel +44 (0)1732 880580
 Fax +44 (0)1732 887013
 Email tsd@hhcelcon.co.uk

| | | |
|--|------------|----------|
| TITLE | | |
| External Masonry Cavity Wall, Partial Fill - Sill | | |
| DWG No. HH-PF-06 | | |
| DRAWN BY | CHECKED BY | |
| SJB | AHR | |
| DATE | SCALE | REV. NO. |
| Nov 2012 | 1:100 @ A4 | C |

This junction detail has been assessed by H+H UK Ltd. for thermal performance based on various Celcon blocks and insulation combinations. Applicable Ψ -values and minimum temperature factors compatible with the latest Building Regulations can be found in our 'H+H Calculated Ψ -values' document, available to download from our website www.hhcelcon.co.uk.



| REV. | DATE | DESCRIPTION | BY. |
|------|---------|--|-----|
| C | 08/2023 | REFERENCES TO CONSTRUCTIVE AND REGISTERED CONSTRUCTION DETAILS REMOVED | SJB |
| B | 04/2021 | REFERENCE TO H+H CALCULATED Ψ -VALUES ADDED | SJB |
| A | 11/2014 | LABC NOTE ADDED | SJB |

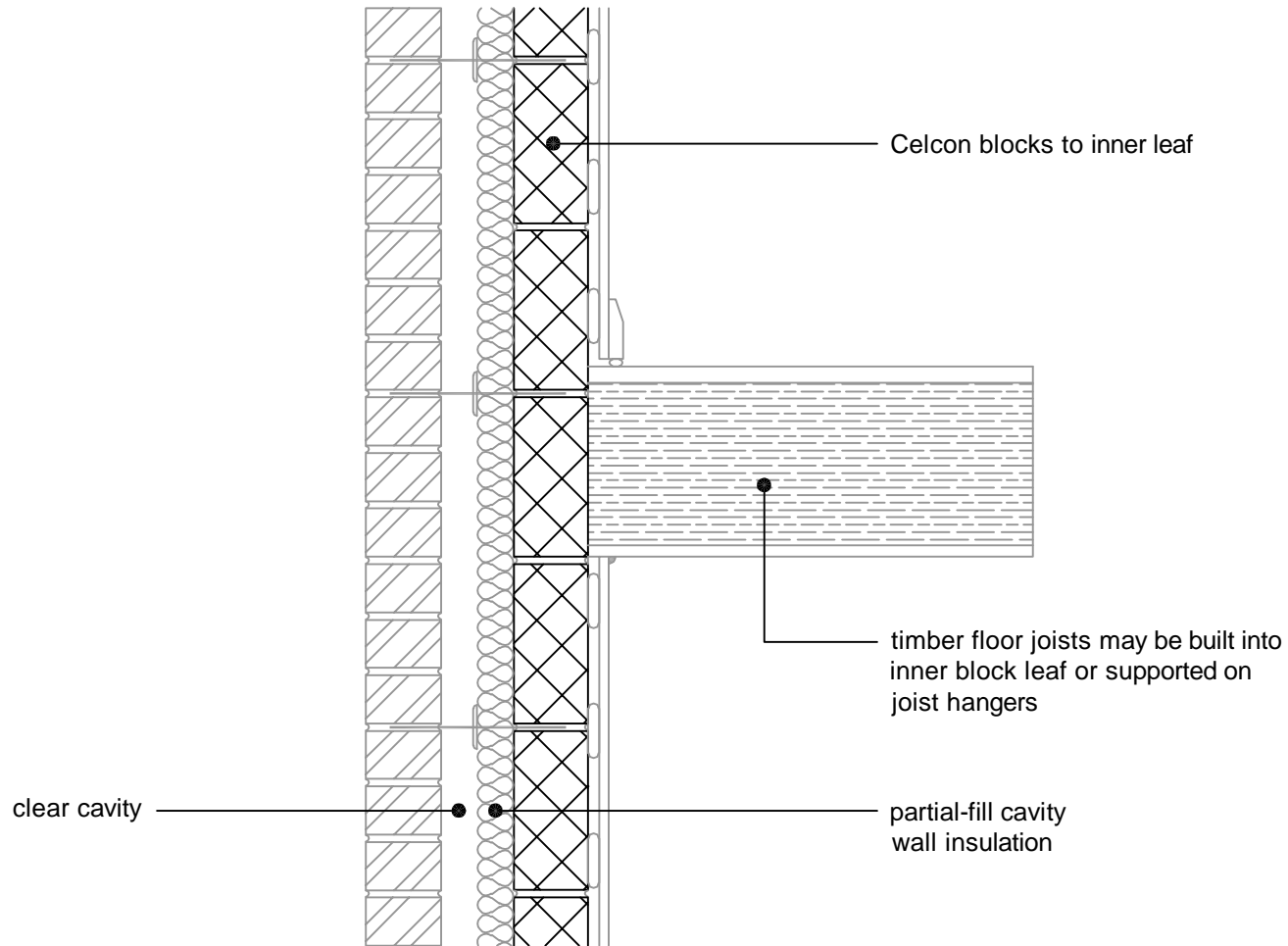
These details have been produced for guidance only. It is the responsibility of the building designer to ensure that the details shown are compatible with the overall building design and will satisfy the relevant parts of the Building Regulations applicable before they are adopted into the project design.



H+H UK Limited
 Technical Services Dept.
 Celcon House
 Ightham, Sevenoaks
 Kent, TN15 9HZ.
 Tel +44 (0)1732 880580
 Fax +44 (0)1732 887013
 Email tsd@hhcelcon.co.uk

| | | |
|--|------------|----------|
| TITLE | | |
| External Masonry Cavity Wall, Partial Fill - Jamb | | |
| DWG No. HH-PF-07 | | |
| DRAWN BY | CHECKED BY | |
| SJB | AHR | |
| DATE | SCALE | REV. NO. |
| Nov 2012 | 1:100 @ A4 | C |

This junction detail has been assessed by H+H UK Ltd. for thermal performance based on various Celcon blocks and insulation combinations. Applicable Ψ -values and minimum temperature factors compatible with the latest Building Regulations can be found in our 'H+H Calculated Ψ -values' document, available to download from our website www.hhcelcon.co.uk.



| REV. | DATE | DESCRIPTION | BY. |
|------|---------|--|-----|
| C | 08/2023 | REFERENCES TO CONSTRUCTIVE AND REGISTERED CONSTRUCTION DETAILS REMOVED | SJB |
| B | 04/2021 | REFERENCE TO H+H CALCULATED Ψ -VALUES ADDED | SJB |
| A | 11/2014 | LABC NOTE ADDED | SJB |

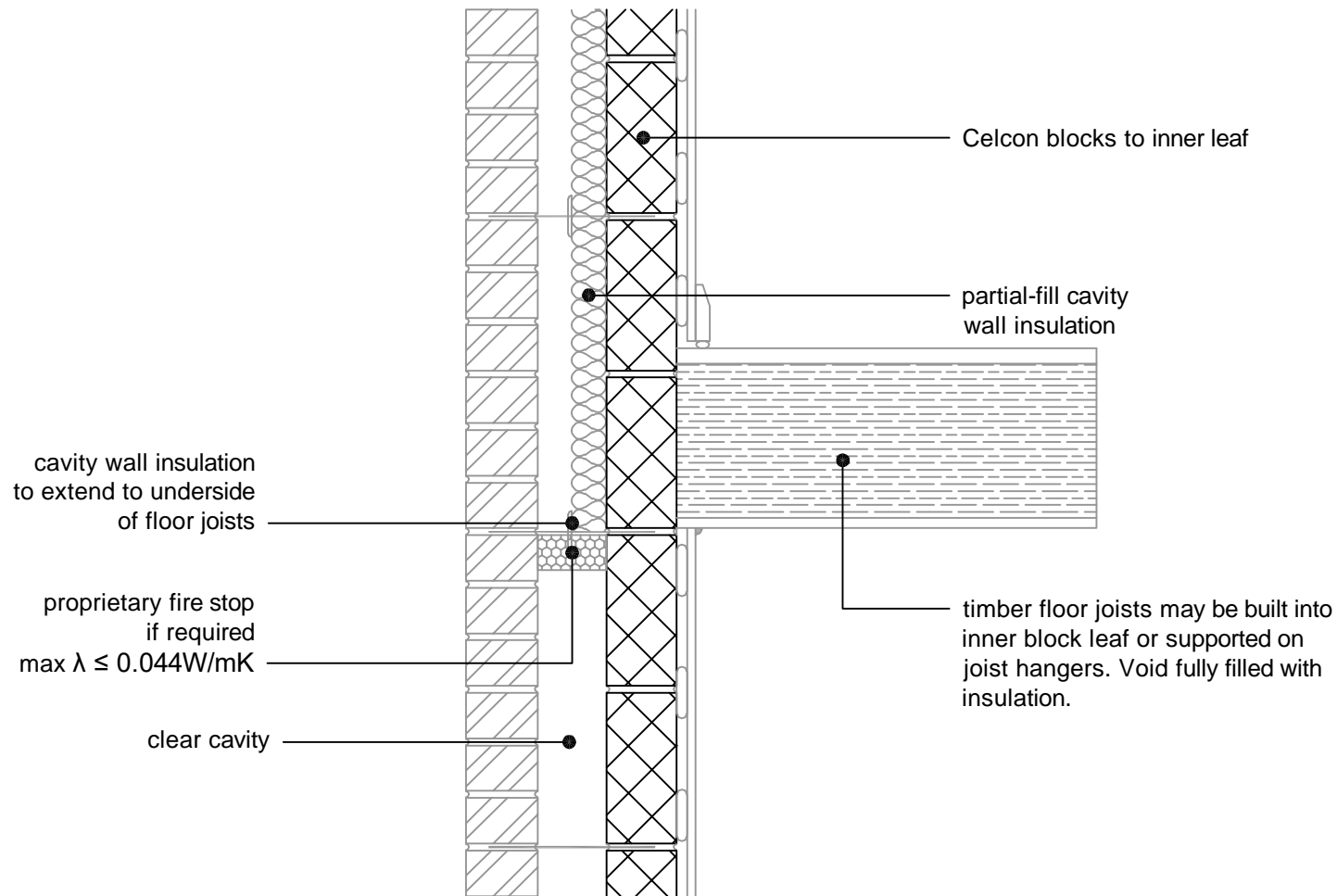
These details have been produced for guidance only. It is the responsibility of the building designer to ensure that the details shown are compatible with the overall building design and will satisfy the relevant parts of the Building Regulations applicable before they are adopted into the project design.



H+H UK Limited
 Technical Services Dept.
 Celcon House
 Ightham, Sevenoaks
 Kent, TN15 9HZ.
 Tel +44 (0)1732 880580
 Fax +44 (0)1732 887013
 Email tsd@hhcelcon.co.uk

| | | |
|--|------------------|------------|
| TITLE External Masonry Cavity Wall, Partial Fill - Intermediate Timber Floor Within A Dwelling | | |
| DWG No. HH-PF-08 | | |
| DRAWN BY SJB | CHECKED BY AHR | |
| DATE Nov 2012 | SCALE 1:100 @ A4 | REV. NO. C |

This junction detail has been assessed by H+H UK Ltd. for thermal performance based on various Celcon blocks and insulation combinations. Applicable Ψ -values and minimum temperature factors compatible with the latest Building Regulations can be found in our 'H+H Calculated Ψ -values' document, available to download from our website www.hhcelcon.co.uk.



| A | 08/2023 | REFERENCES TO CONSTRUCTIVE AND REGISTERED CONSTRUCTION DETAILS REMOVED | SJB |
|------|---------|--|-----|
| REV. | DATE | DESCRIPTION | BY |

These details have been produced for guidance only. It is the responsibility of the building designer to ensure that the details shown are compatible with the overall building design and will satisfy the relevant parts of the Building Regulations applicable before they are adopted into the project design.



H+H UK Limited
 Technical Services Dept.
 Celcon House
 Ightham, Sevenoaks
 Kent, TN15 9HZ
 Tel +44 (0)1732 880580
 Fax +44 (0)1732 887013
 Email tsd@hhcelcon.co.uk

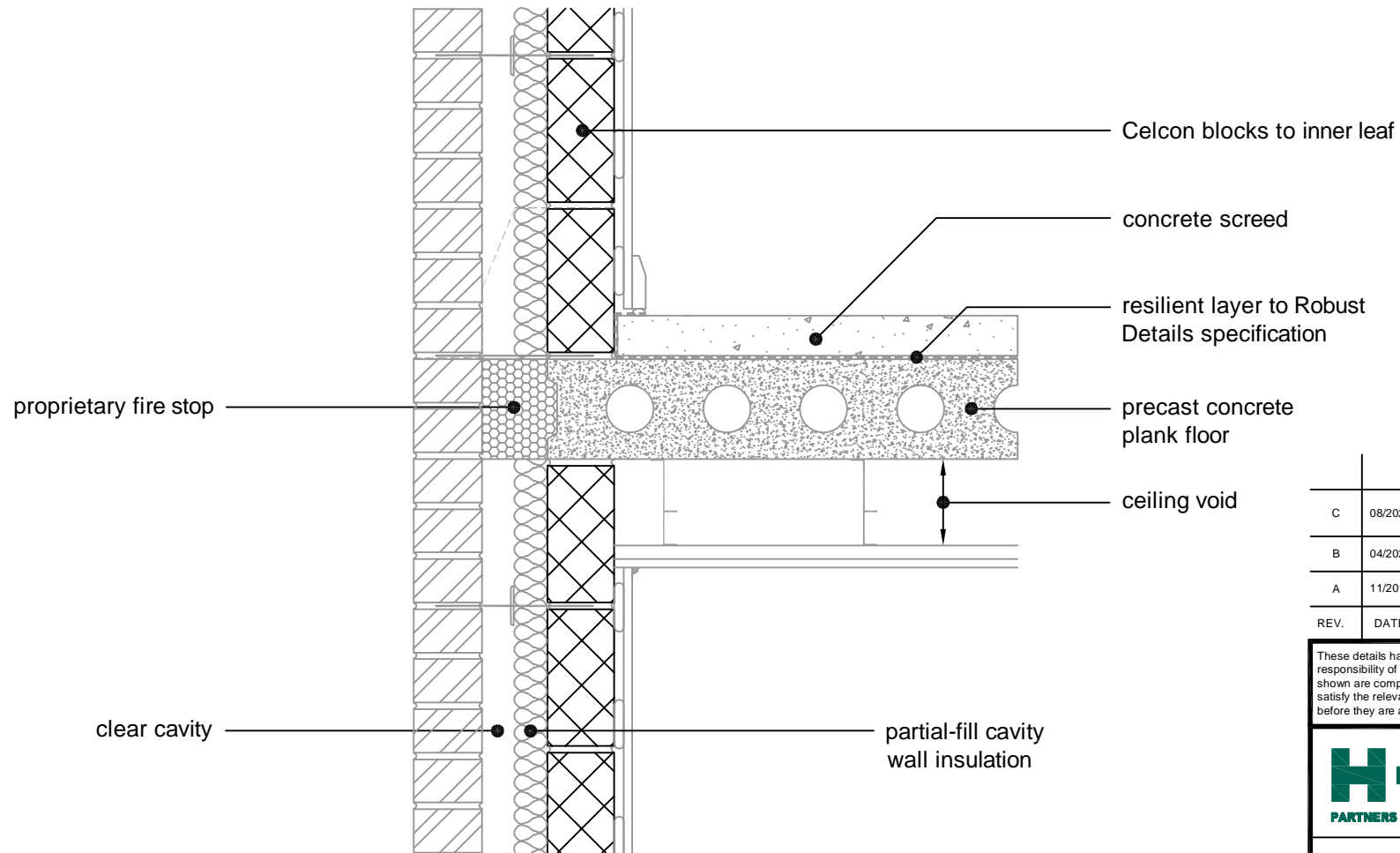
TITLE External Masonry Cavity Wall,
 Partial Fill - Intermediate Timber Floor,
 Insulated (over exposed area)

DWG No. HH-PF-25

DRAWN BY SJB CHECKED BY AHR

DATE Apr 2021 SCALE 1:100 @ A4 REV. NO. A

This junction detail has been assessed by H+H UK Ltd. for thermal performance based on various Celcon blocks and insulation combinations. Applicable Ψ -values and minimum temperature factors compatible with the latest Building Regulations can be found in our 'H+H Calculated Ψ -values' document, available to download from our website www.hhcelcon.co.uk.



| REV. | DATE | DESCRIPTION | BY. |
|------|---------|--|-----|
| C | 08/2023 | REFERENCES TO CONSTRUCTIVE AND REGISTERED CONSTRUCTION DETAILS REMOVED | SJB |
| B | 04/2021 | REFERENCE TO H+H CALCULATED Ψ -VALUES ADDED | SJB |
| A | 11/2014 | PROPRIETARY FIRE STOP NOTE REVISED. LABC NOTE ADDED. | SJB |

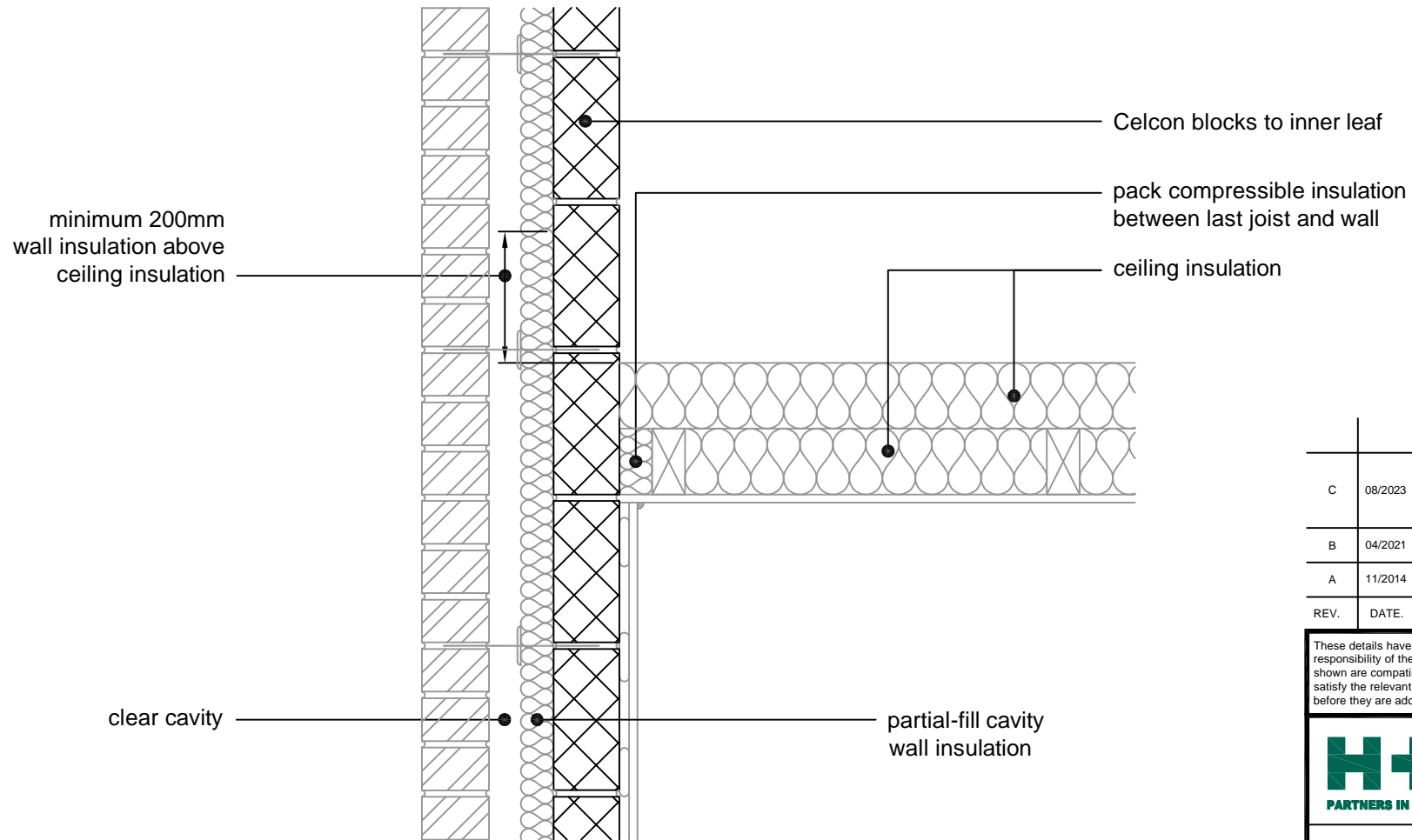
These details have been produced for guidance only. It is the responsibility of the building designer to ensure that the details shown are compatible with the overall building design and will satisfy the relevant parts of the Building Regulations applicable before they are adopted into the project design.



H+H UK Limited
 Technical Services Dept.
 Celcon House
 Ightham, Sevenoaks
 Kent, TN15 9HZ.
 Tel +44 (0)1732 880580
 Fax +44 (0)1732 887013
 Email tsd@hhcelcon.co.uk

| | | |
|--|----------|------------------|
| TITLE External Masonry Cavity Wall, Partial Fill - Precast Concrete Separating Floor Between Dwellings | | |
| DWG No. HH-PF-09 | | |
| DRAWN BY | SJB | CHECKED BY AHR |
| DATE | Nov 2012 | SCALE 1:100 @ A4 |
| REV. NO. | C | |

This junction detail has been assessed by H+H UK Ltd. for thermal performance based on various Celcon blocks and insulation combinations. Applicable Ψ -values and minimum temperature factors compatible with the latest Building Regulations can be found in our 'H+H Calculated Ψ -values' document, available to download from our website www.hhcelcon.co.uk.



| C | 08/2023 | REFERENCES TO CONSTRUCTIVE AND REGISTERED CONSTRUCTION DETAILS REMOVED. INSULATION BEHIND LAST JOIST LOWERED TO FLUSH WITH JOIST | SJB |
|------|---------|--|-----|
| B | 04/2021 | REFERENCE TO H+H CALCULATED Ψ -VALUES ADDED | SJB |
| A | 11/2014 | LABC NOTE ADDED | SJB |
| REV. | DATE. | DESCRIPTION. | BY. |

These details have been produced for guidance only. It is the responsibility of the building designer to ensure that the details shown are compatible with the overall building design and will satisfy the relevant parts of the Building Regulations applicable before they are adopted into the project design.



H+H UK Limited
 Technical Services Dept.
 Celcon House
 Ightham, Sevenoaks
 Kent, TN15 9HZ
 Tel +44 (0)1732 880580
 Fax +44 (0)1732 887013
 Email tsd@hhcelcon.co.uk

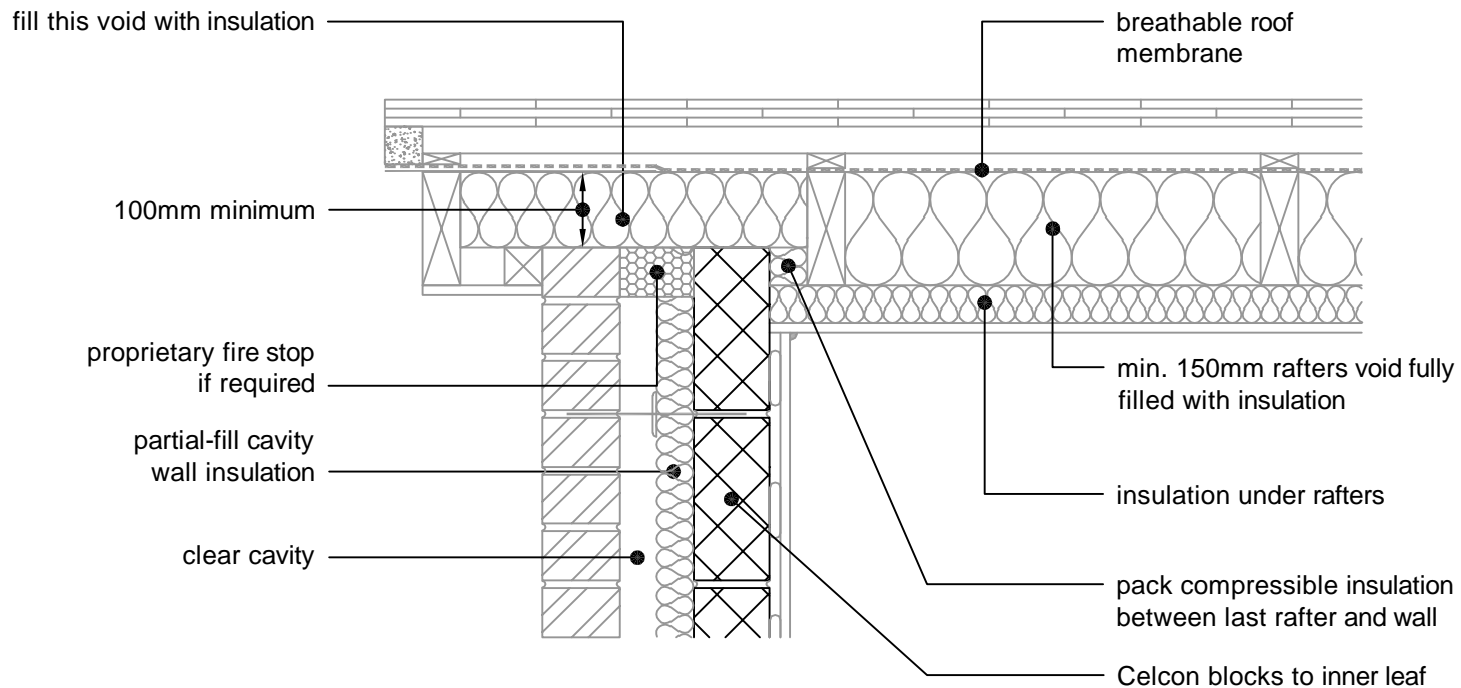
TITLE External Masonry Cavity Wall,
 Partial Fill - Pitched Roof, Gable -
 Insulation At Ceiling Level, Ventilated Loft

DWG No. HH-PF-10

DRAWN BY SJB CHECKED BY AHR

DATE Nov 2012 SCALE 1:100 @ A4 REV.NO. C

This junction detail has been assessed by H+H UK Ltd. for thermal performance based on various Celcon blocks and insulation combinations. Applicable Ψ -values and minimum temperature factors compatible with the latest Building Regulations can be found in our 'H+H Calculated Ψ -values' document, available to download from our website www.hhcelcon.co.uk.



| REV. | DATE. | DESCRIPTION. | BY. |
|------|---------|---|-----|
| D | 08/2023 | REFERENCES TO CONSTRUCTIVE AND REGISTERED CONSTRUCTION DETAILS REMOVED | SJB |
| C | 04/2021 | REFERENCE TO H+H CALCULATED Ψ -VALUES ADDED. RAFTERS INSULATION NOTE REVISED PROPRIETARY FIRE STOP ADDED | SJB |
| B | 11/2014 | LABC NOTE ADDED | SJB |
| A | 11/2013 | RAFTERS INSULATION THICKNESS NOTE ADDED | SJB |

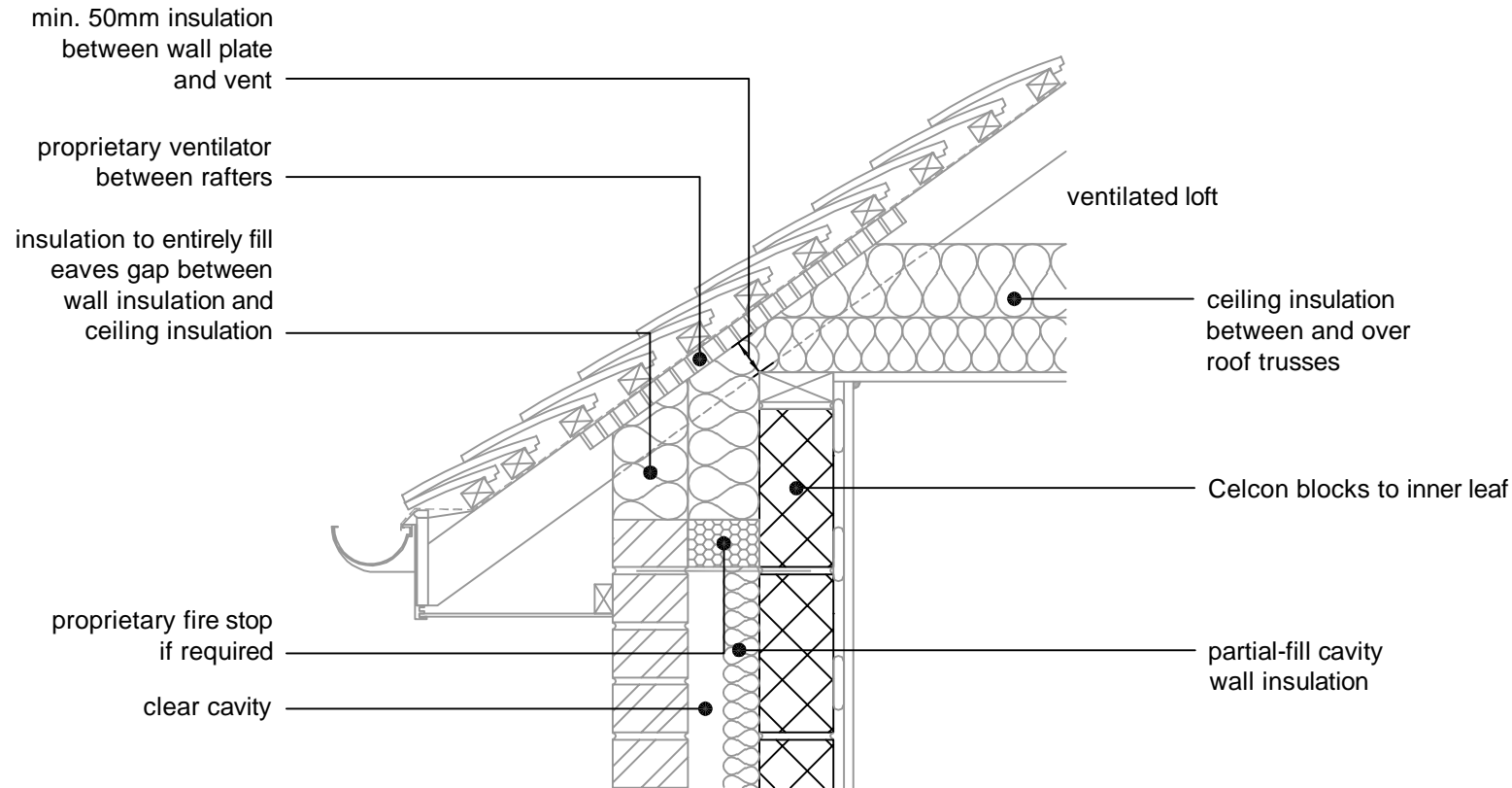
These details have been produced for guidance only. It is the responsibility of the building designer to ensure that the details shown are compatible with the overall building design and will satisfy the relevant parts of the Building Regulations applicable before they are adopted into the project design.



H+H UK Limited
 Technical Services Dept.
 Celcon House
 Ightham, Sevenoaks
 Kent, TN15 9HZ.
 Tel +44 (0)1732 880580
 Fax +44 (0)1732 887013
 Email tsd@hhcelcon.co.uk

| | | |
|---|------------------|-----------|
| TITLE External Masonry Cavity Wall, Partial Fill - Pitched Roof, Gable - Insulation At Rafter Level, Unventilated Rafter Void | | |
| DWG No. HH-PF-11 | | |
| DRAWN BY SJB | CHECKED BY AHR | |
| DATE Nov 2012 | SCALE 1:100 @ A4 | REV.No. D |

This junction detail has been assessed by H+H UK Ltd. for thermal performance based on various Celcon blocks and insulation combinations. Applicable Ψ -values and minimum temperature factors compatible with the latest Building Regulations can be found in our 'H+H Calculated Ψ -values' document, available to download from our website www.hhcelcon.co.uk.



| REV. | DATE | DESCRIPTION | BY. |
|------|---------|---|-----|
| D | 08/2023 | REFERENCES TO CONSTRUCTIVE AND REGISTERED CONSTRUCTION DETAILS REMOVED | SJB |
| C | 04/2021 | REFERENCE TO H+H CALCULATED Ψ -VALUES ADDED. PROPRIETARY FIRE STOP ADDED | SJB |
| B | 11/2014 | LABC NOTE ADDED | SJB |
| A | 11/2013 | WALL PLATE INSULATION COVER NOTE MOVED | SJB |

These details have been produced for guidance only. It is the responsibility of the building designer to ensure that the details shown are compatible with the overall building design and will satisfy the relevant parts of the Building Regulations applicable before they are adopted into the project design.



H+H UK Limited
 Technical Services Dept.
 Celcon House
 Ightham, Sevenoaks
 Kent, TN15 9HZ.
 Tel +44 (0)1732 880580
 Fax +44 (0)1732 887013
 Email tsd@hhcelcon.co.uk

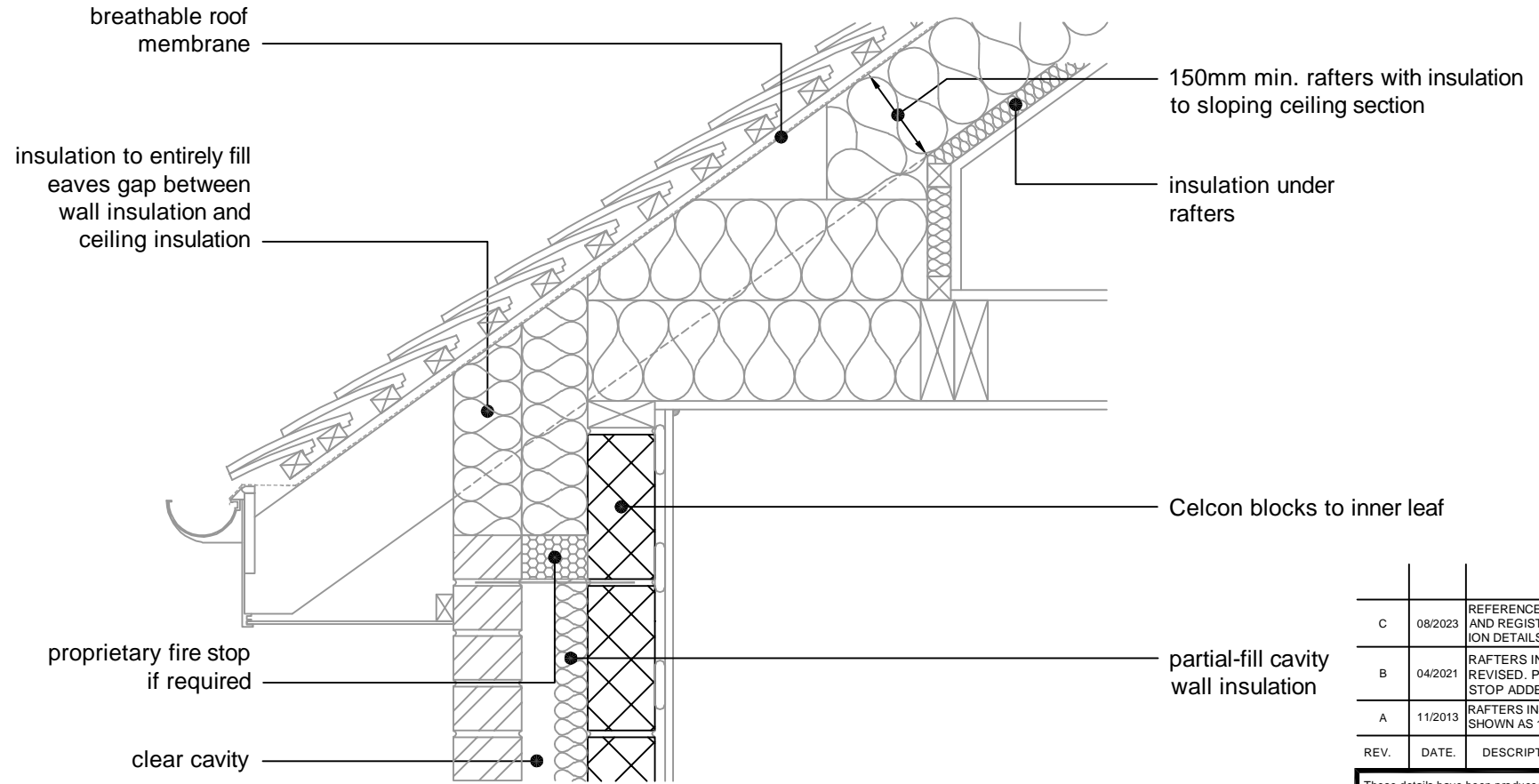
TITLE External Masonry Cavity Wall,
 Partial Fill - Pitched Roof, Eaves - Insulation
 At Ceiling Level, Ventilated Loft

DWG No. HH-PF-12

DRAWN BY SJB CHECKED BY AHR

DATE Nov 2012 SCALE 1:100 @ A4 REV. NO. D

This junction detail has been assessed by H+H UK Ltd. for thermal performance based on various Celcon blocks and insulation combinations. Applicable Ψ -values and minimum temperature factors compatible with the latest Building Regulations can be found in our 'H+H Calculated Ψ -values' document, available to download from our website www.hhcelcon.co.uk.



| REV. | DATE. | DESCRIPTION. | BY. |
|------|---------|--|-----|
| C | 08/2023 | REFERENCES TO CONSTRUCTIVE AND REGISTERED CONSTRUCTION DETAILS REMOVED | SJB |
| B | 04/2021 | RAFTERS INSULATION NOTE REVISED. PROPRIETARY FIRE STOP ADDED | SJB |
| A | 11/2013 | RAFTERS INSULATION NOW SHOWN AS 150mm. | SJB |

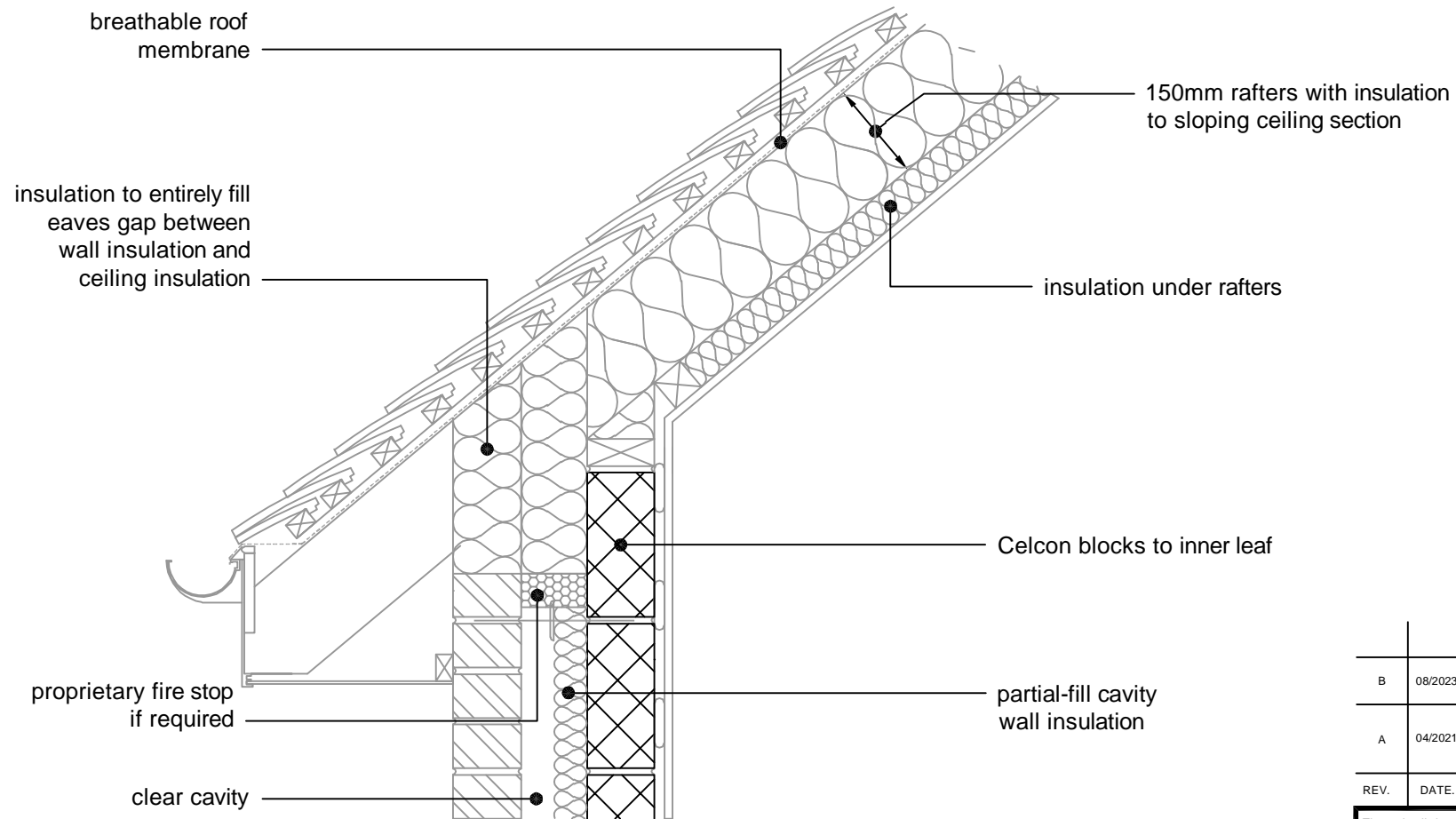
These details have been produced for guidance only. It is the responsibility of the building designer to ensure that the details shown are compatible with the overall building design and will satisfy the relevant parts of the Building Regulations applicable before they are adopted into the project design.

H+H
PARTNERS IN WALL BUILDING

H+H UK Limited
 Technical Services Dept.
 Celcon House
 Ightham, Sevenoaks
 Kent, TN15 9HZ.
 Tel +44 (0)1732 880580
 Fax +44 (0)1732 887013
 Email tsd@hhcelcon.co.uk

| | | | |
|----------|------------|------------|---|
| TITLE | | | External Masonry Cavity Wall, Partial Fill - Pitched Roof, Eaves - Insulation At Rafter Level, Unventilated Rafter Void |
| DWG No. | | | HH-PF-13 |
| DRAWN BY | | CHECKED BY | |
| SJB | | AHR | |
| DATE | SCALE | REV. NO. | |
| Nov 2012 | 1:100 @ A4 | C | |

This junction detail has been assessed by H+H UK Ltd. for thermal performance based on various Celcon blocks and insulation combinations. Applicable Ψ -values and minimum temperature factors compatible with the latest Building Regulations can be found in our 'H+H Calculated Ψ -values' document, available to download from our website www.hhcelcon.co.uk.



| REV. | DATE. | DESCRIPTION. | BY. |
|------|---------|--|-----|
| B | 08/2023 | REFERENCES TO CONSTRUCTIVE AND REGISTERED CONSTRUCTION DETAILS REMOVED | SJB |
| A | 04/2021 | REFERENCE TO H+H CALCULATED Ψ -VALUES ADDED. FIRE STOP AND RAFTERS INSULATION NOTES REVISED | SJB |

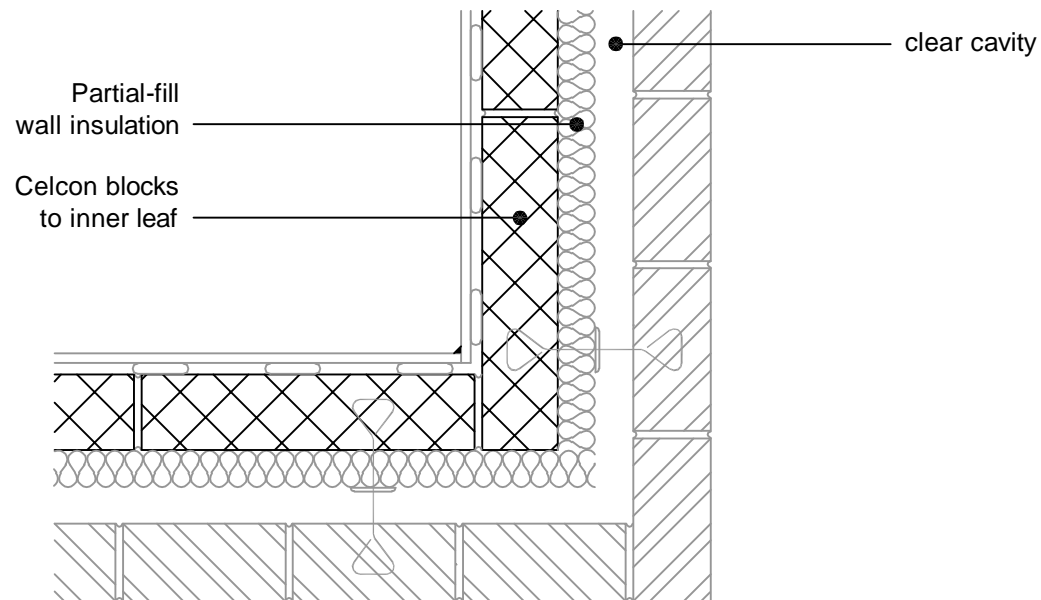
These details have been produced for guidance only. It is the responsibility of the building designer to ensure that the details shown are compatible with the overall building design and will satisfy the relevant parts of the Building Regulations applicable before they are adopted into the project design.

H+H
PARTNERS IN WALL BUILDING

H+H UK Limited
Technical Services Dept.
Celcon House
Ightham, Sevenoaks
Kent, TN15 9HZ.
Tel +44 (0)1732 880580
Fax +44 (0)1732 887013
Email tsd@hhcelcon.co.uk

| | | |
|---|----------|------------------|
| TITLE External Masonry Cavity Wall, Partial Fill - Pitched Roof, Eaves - Insulation At Rafter Level, Unventilated Rafter Void | | |
| DWG No. HH-PF-23 | | |
| DRAWN BY | SJB | CHECKED BY AHR |
| DATE | Nov 2014 | SCALE 1:100 @ A4 |
| REV.No. | B | |

This junction detail has been assessed by H+H UK Ltd. for thermal performance based on various Celcon blocks and insulation combinations. Applicable Ψ -values and minimum temperature factors compatible with the latest Building Regulations can be found in our 'H+H Calculated Ψ -values' document, available to download from our website www.hhcelcon.co.uk.



| REV. | DATE. | DESCRIPTION. | BY. |
|------|---------|--|-----|
| C | 08/2023 | REFERENCES TO CONSTRUCTIVE AND REGISTERED CONSTRUCTION DETAILS REMOVED | SJB |
| B | 04/2021 | REFERENCE TO H+H CALCULATED Ψ -VALUES ADDED | SJB |
| A | 11/2014 | LABC NOTE ADDED | SJB |

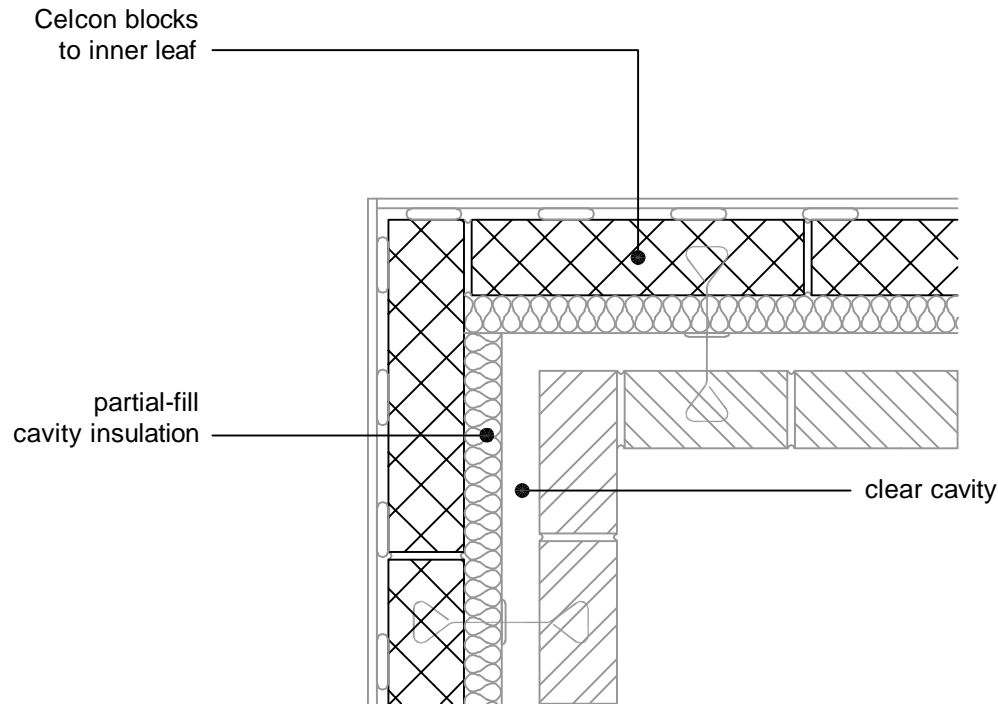
These details have been produced for guidance only. It is the responsibility of the building designer to ensure that the details shown are compatible with the overall building design and will satisfy the relevant parts of the Building Regulations applicable before they are adopted into the project design.



H+H UK Limited
 Technical Services Dept.
 Celcon House
 Ightham, Sevenoaks
 Kent, TN15 9HZ.
 Tel +44 (0)1732 880580
 Fax +44 (0)1732 887013
 Email tsd@hhcelcon.co.uk

| | | |
|---|------------|----------|
| TITLE | | |
| External Masonry Cavity Wall, Partial Fill - Normal Corner | | |
| DWG No. HH-PF-14 | | |
| DRAWN BY | CHECKED BY | |
| SJB | AHR | |
| DATE | SCALE | REV. NO. |
| Nov 2012 | 1:100 @ A4 | C |

This junction detail has been assessed by H+H UK Ltd. for thermal performance based on various Celcon blocks and insulation combinations. Applicable Ψ -values and minimum temperature factors compatible with the latest Building Regulations can be found in our 'H+H Calculated Ψ -values' document, available to download from our website www.hhcelcon.co.uk.



| REV. | DATE | DESCRIPTION | BY. |
|------|---------|--|-----|
| C | 08/2023 | REFERENCES TO CONSTRUCTIVE AND REGISTERED CONSTRUCTION DETAILS REMOVED | SJB |
| B | 04/2021 | REFERENCE TO H+H CALCULATED Ψ -VALUES ADDED | SJB |
| A | 11/2014 | LABC NOTE ADDED | SJB |

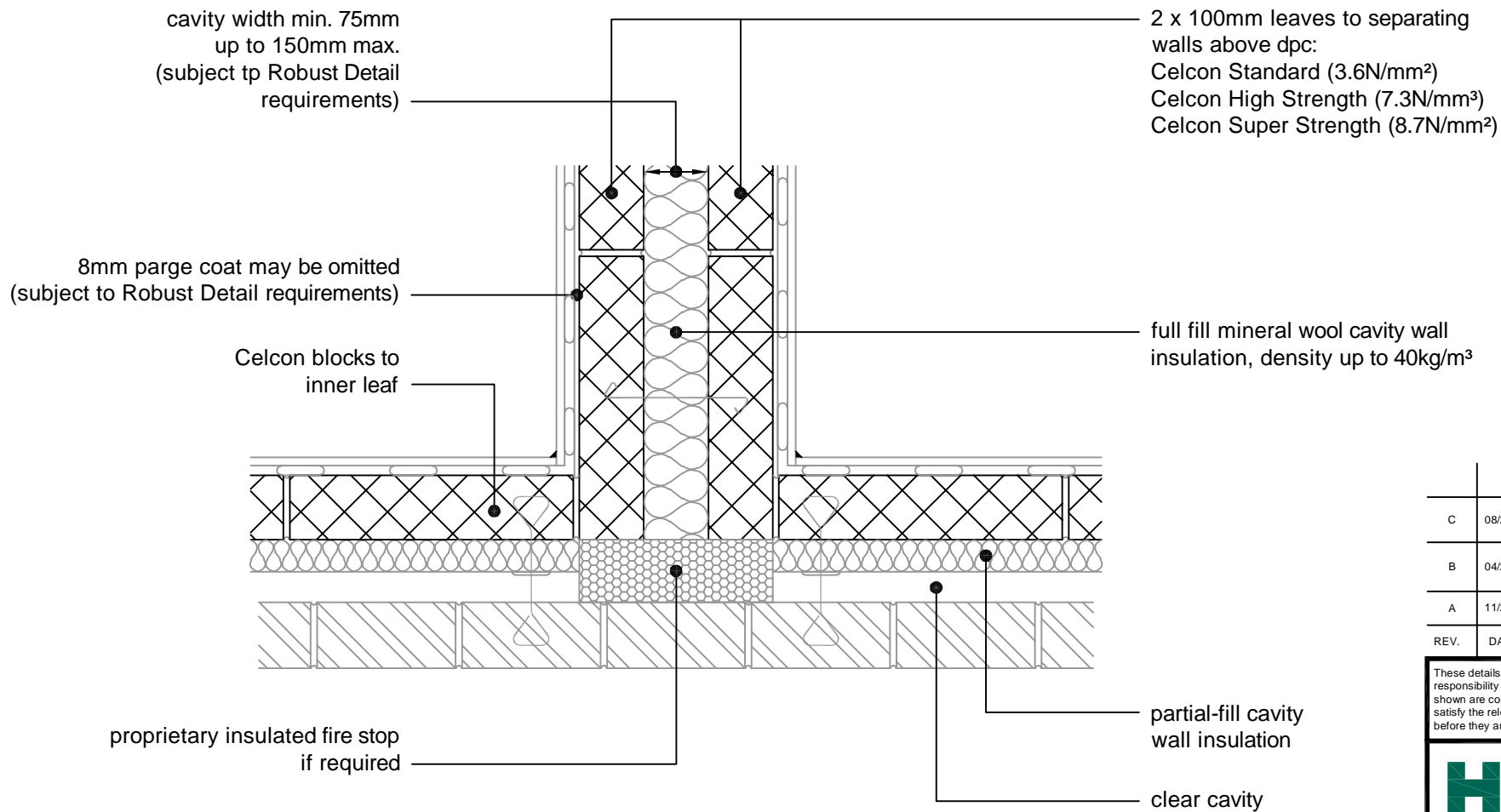
These details have been produced for guidance only. It is the responsibility of the building designer to ensure that the details shown are compatible with the overall building design and will satisfy the relevant parts of the Building Regulations applicable before they are adopted into the project design.



H+H UK Limited
 Technical Services Dept.
 Celcon House
 Ightham, Sevenoaks
 Kent, TN15 9HZ.
 Tel +44 (0)1732 880580
 Fax +44 (0)1732 887013
 Email tsd@hhcelcon.co.uk

| | | |
|---|------------|----------|
| TITLE | | |
| External Masonry Cavity Wall, Partial Fill - Inverted Corner | | |
| DWG No. HH-PF-15 | | |
| DRAWN BY | CHECKED BY | |
| SJB | AHR | |
| DATE | SCALE | REV. NO. |
| Nov 2012 | 1:100 @ A4 | C |

This junction detail has been assessed by H+H UK Ltd. for thermal performance based on various Celcon blocks and insulation combinations. Applicable Ψ -values and minimum temperature factors compatible with the latest Building Regulations can be found in our 'H+H Calculated Ψ -values' document, available to download from our website www.hhcelcon.co.uk.



| REV. | DATE. | DESCRIPTION. | BY. |
|------|---------|--|-----|
| C | 08/2023 | REFERENCES TO CONSTRUCTIVE AND REGISTERED CONSTRUCTION DETAILS REMOVED | SJB |
| B | 04/2021 | REFERENCE TO H+H CALCULATED Ψ-VALUES ADDED. MAX. CAVITY WIDTH REVISED | SJB |
| A | 11/2014 | PROPRIETARY FIRE STOP NOTE REVISED. LABC NOTE ADDED. | SJB |

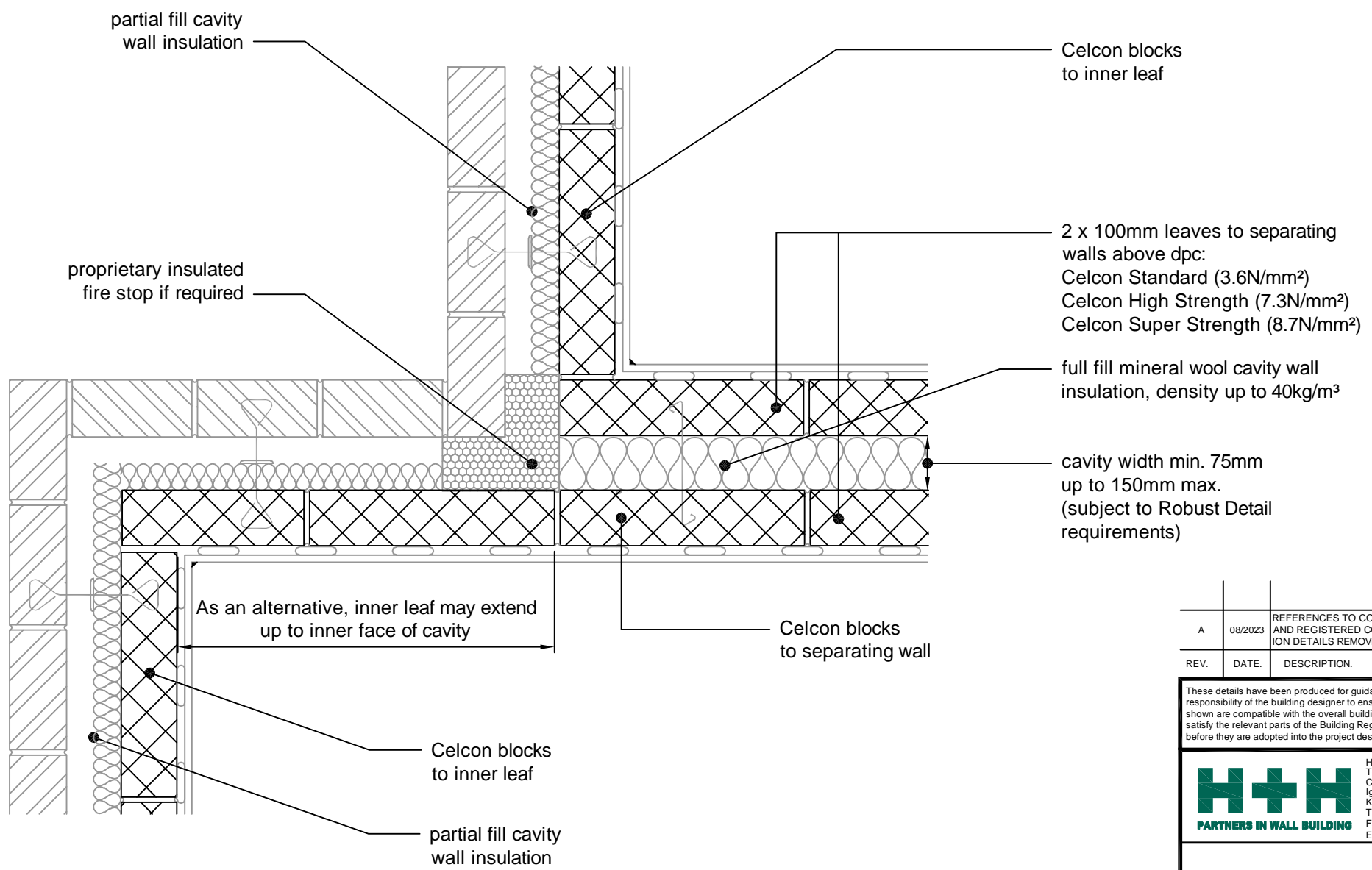
These details have been produced for guidance only. It is the responsibility of the building designer to ensure that the details shown are compatible with the overall building design and will satisfy the relevant parts of the Building Regulations applicable before they are adopted into the project design.

H+H PARTNERS IN WALL BUILDING

H+H UK Limited
 Technical Services Dept.
 Celcon House
 Ightham, Sevenoaks
 Kent, TN15 9HZ.
 Tel +44 (0)1732 880580
 Fax +44 (0)1732 887013
 Email tsd@hhcelcon.co.uk

| | | |
|---|---------------------|--------------|
| TITLE External Masonry Cavity Wall, Partial Fill - Party Wall Between Dwellings | | |
| DWG No. HH-PF-16 | | |
| DRAWN BY SJB | CHECKED BY AHR | |
| DATE Nov 2012 | SCALE 1:100 @ A4 | REV.NO. C |

This junction detail has been assessed by H+H UK Ltd. for thermal performance based on various Celcon blocks and insulation combinations. Applicable Ψ-values and minimum temperature factors compatible with the latest Building Regulations can be found in our 'H+H Calculated Ψ-values' document, available to download from our website www.hhcelcon.co.uk.



| A | 08/2023 | REFERENCES TO CONSTRUCTIVE AND REGISTERED CONSTRUCTION DETAILS REMOVED | SJB |
|------|---------|--|-----|
| REV. | DATE | DESCRIPTION | BY |

These details have been produced for guidance only. It is the responsibility of the building designer to ensure that the details shown are compatible with the overall building design and will satisfy the relevant parts of the Building Regulations applicable before they are adopted into the project design.

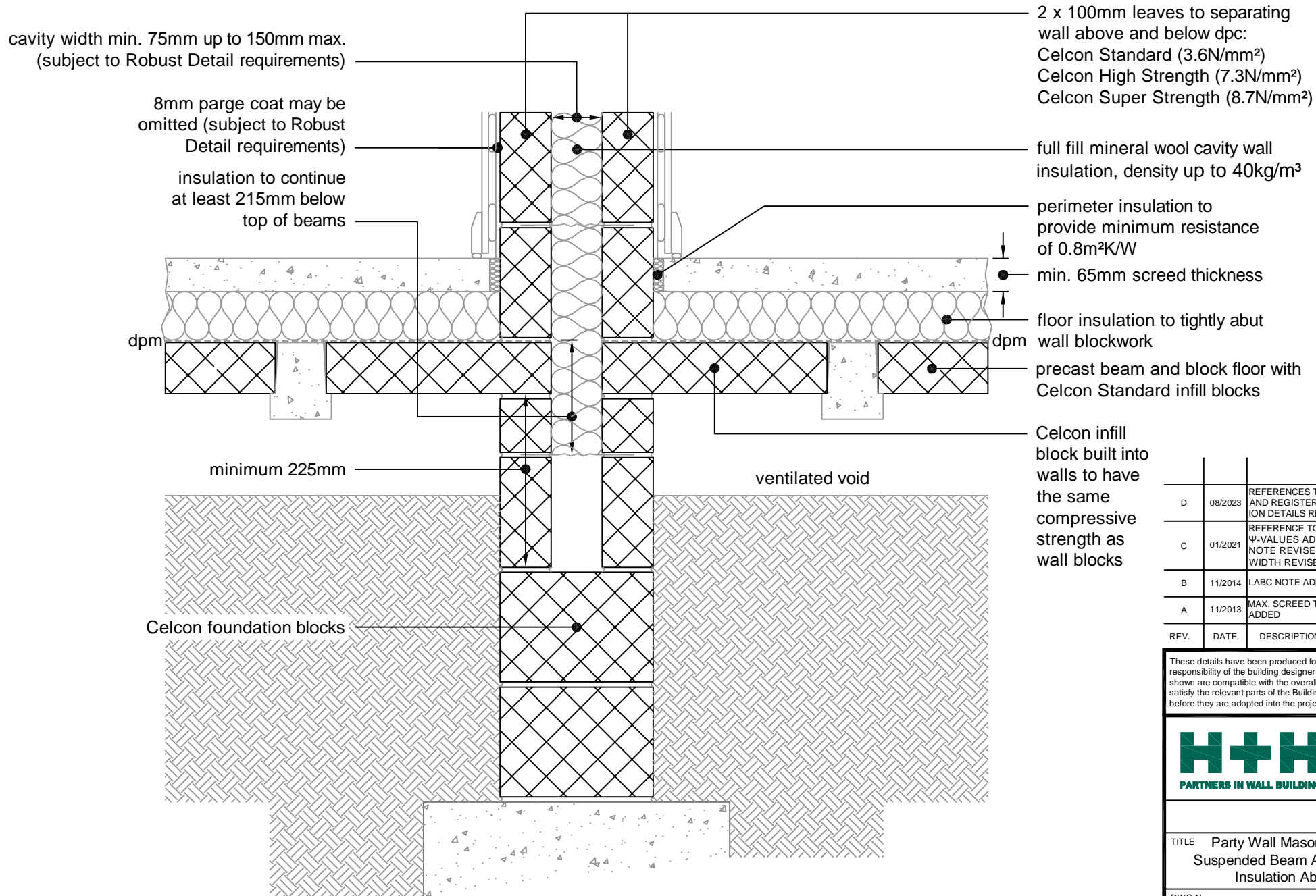


H+H
PARTNERS IN WALL BUILDING

H+H UK Limited
Technical Services Dept.
Celcon House
Ightham, Sevenoaks
Kent, TN15 9HZ
Tel +44 (0)1732 880580
Fax +44 (0)1732 887013
Email tsd@hhcelcon.co.uk

| | | |
|--|------------------|-----------|
| TITLE External Masonry Cavity Wall, Partial Fill - Staggered External (flanking) Wall Junction | | |
| DWG No. HH-PF-24 | | |
| DRAWN BY SJB | CHECKED BY AHR | |
| DATE Apr 2021 | SCALE 1:100 @ A4 | REV.NO. A |

This junction detail has been assessed by H+H UK Ltd. for thermal performance based on various Celcon blocks and insulation combinations. Applicable Ψ -values and minimum temperature factors compatible with the latest Building Regulations can be found in our 'H+H Calculated Ψ -values' document, available to download from our website www.hhcelcon.co.uk.



| REV. | DATE. | DESCRIPTION. | BY. |
|------|---------|--|-----|
| D | 08/2023 | REFERENCES TO CONSTRUCTIVE AND REGISTERED CONSTRUCTION DETAILS REMOVED | SJB |
| C | 01/2021 | REFERENCE TO H+H CALCULATED Ψ-VALUES ADDED. SCREED NOTE REVISED. MAX. CAVITY WIDTH REVISED | SJB |
| B | 11/2014 | LABC NOTE ADDED. | SJB |
| A | 11/2013 | MAX. SCREED THICKNESS NOTE ADDED | SJB |

These details have been produced for guidance only. It is the responsibility of the building designer to ensure that the details shown are compatible with the overall building design and will satisfy the relevant parts of the Building Regulations applicable before they are adopted into the project design.

H+H UK Limited
 Technical Services Dept.
 Celcon House
 Ightham, Sevenoaks
 Kent, TN15 9HZ.
 Tel +44 (0)1732 880580
 Fax +44 (0)1732 887013
 Email tsd@hhcelcon.co.uk

| | | |
|---|------------------|------------|
| TITLE Party Wall Masonry, Full Fill - Suspended Beam And Block Floor, Insulation Above Slab | | |
| DWG No. HH-PW-17 | | |
| DRAWN BY SJB | CHECKED BY AHR | |
| DATE Nov 2012 | SCALE 1:100 @ A4 | REV. NO. D |

This junction detail has been assessed by H+H UK Ltd. for thermal performance based on various Celcon blocks and insulation combinations. Applicable Ψ-values and minimum temperature factors compatible with the latest Building Regulations can be found in our 'H+H Calculated Ψ-values' document, available to download from our website www.hhcelcon.co.uk.

cavity width min. 75mm up to 150mm max.
(subject to Robust Detail requirements)

8mm parge coat may be omitted
(subject to Robust Detail requirements)

full fill mineral wool cavity wall
insulation, density up to 40kg/m³

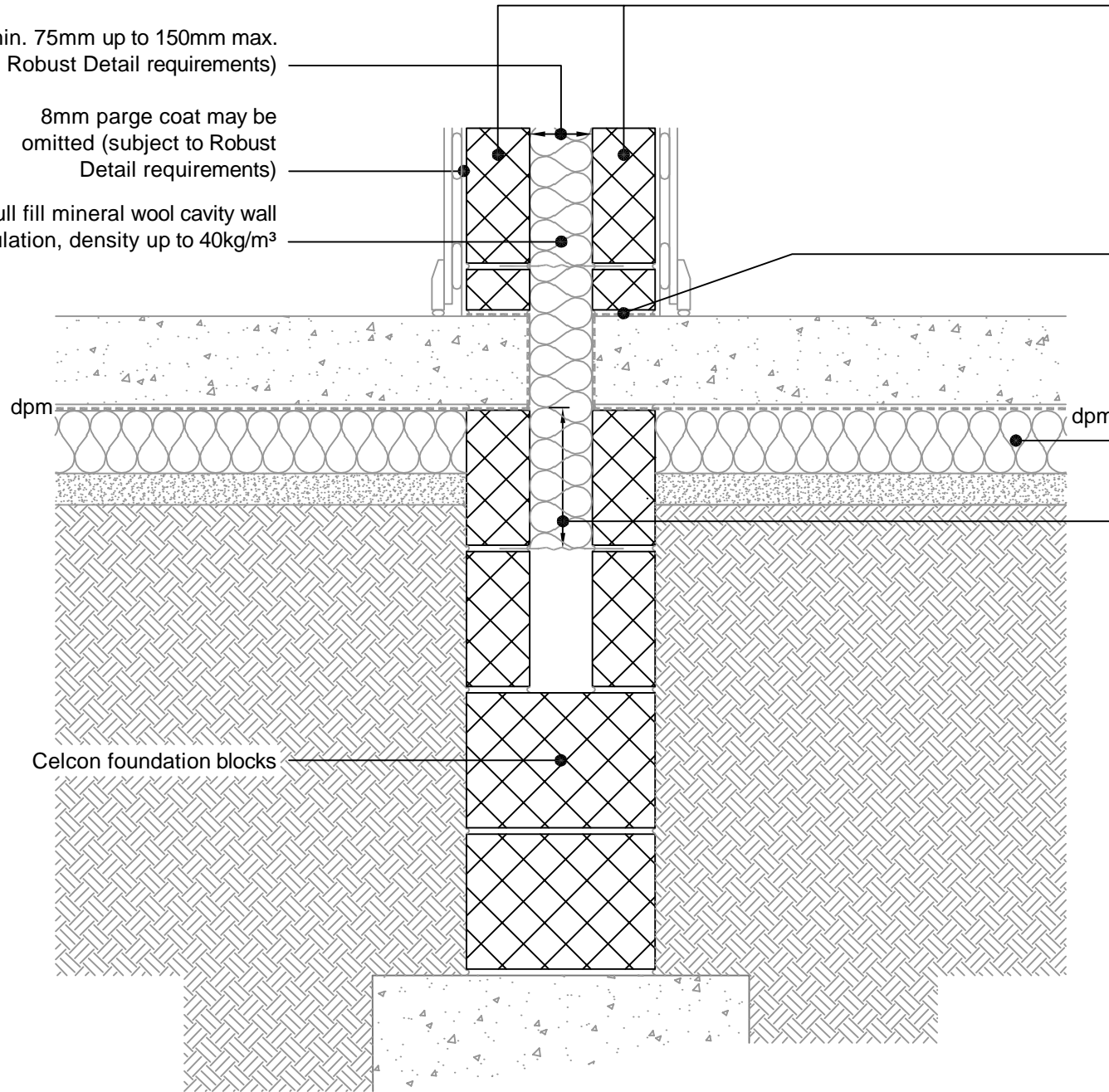
2 x 100mm leaves to separating
wall above and below dpc:
Celcon Standard (3.6N/mm²)
Celcon High Strength (7.3N/mm²)
Celcon Super Strength (8.7N/mm²)

base course incorporating
lapped dpm and dpc

floor insulation to tightly abut
wall blockwork

insulation to continue at
least 215mm
below
underside of
slab

Celcon foundation blocks



| REV. | DATE. | DESCRIPTION. | BY. |
|------|---------|--|-----|
| D | 08/2023 | REFERENCES TO CONSTRUCTIVE AND REGISTERED CONSTRUCTION DETAILS REMOVED | SJB |
| C | 04/2021 | REFERENCE TO H+H CALCULATED Ψ-VALUES ADDED. MAX. CAVITY WIDTH REVISED | SJB |
| B | 11/2014 | MAX. FLOOR THICKNESS NOTE REMOVED. LABC REFERENCE ADDED. | SJB |
| A | 11/2013 | MAX. SCREED THICKNESS NOTE ADDED | SJB |

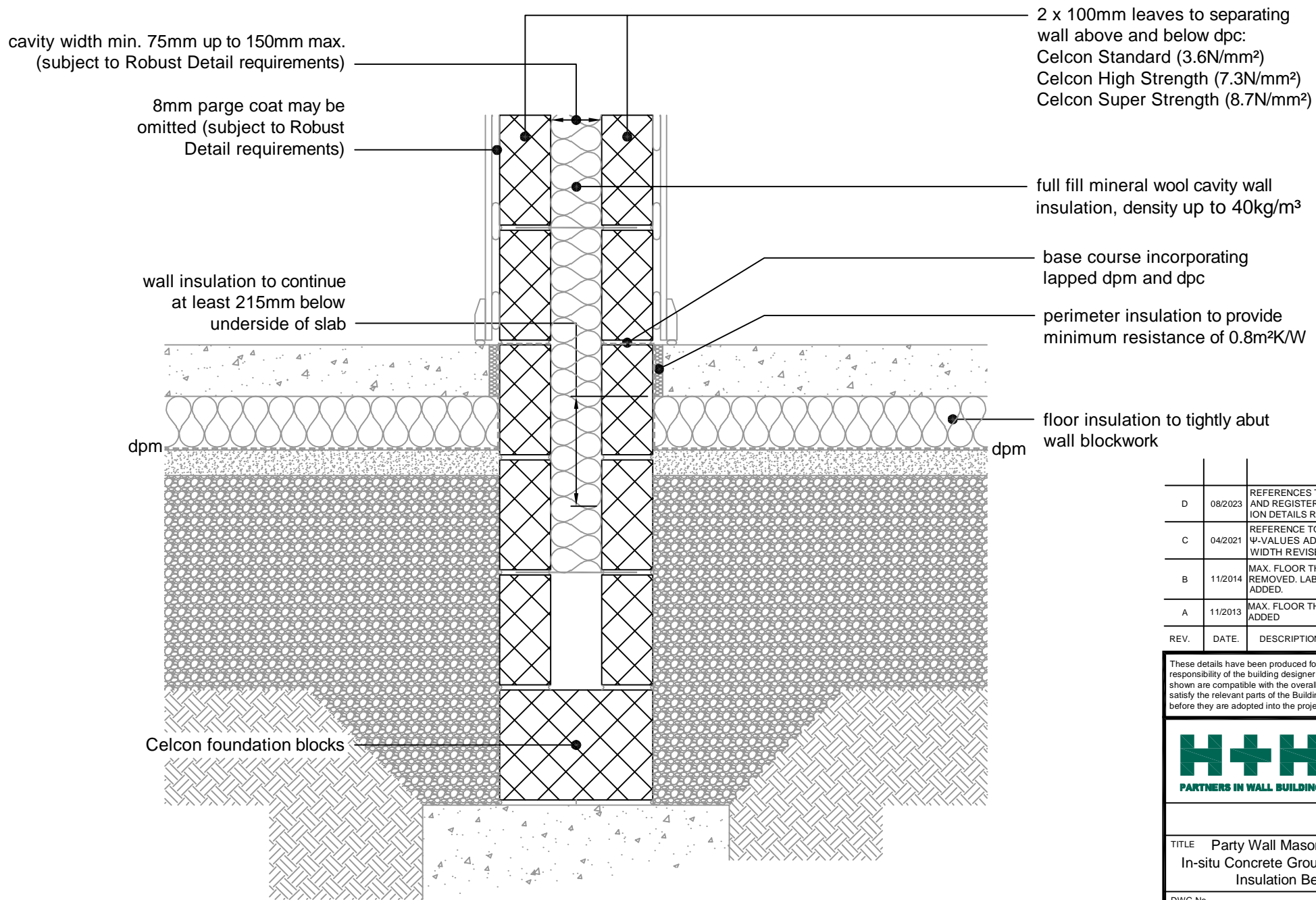
These details have been produced for guidance only. It is the responsibility of the building designer to ensure that the details shown are compatible with the overall building design and will satisfy the relevant parts of the Building Regulations applicable before they are adopted into the project design.

H+H PARTNERS IN WALL BUILDING

H+H UK Limited
Technical Services Dept.
Celcon House
Ightham, Sevenoaks
Kent, TN15 9HZ.
Tel +44 (0)1732 880580
Fax +44 (0)1732 887013
Email tsd@hhcelcon.co.uk

| | | |
|---|------------------|-----------|
| TITLE Party Wall Masonry, Full Fill - Suspended Concrete Floor, Insulation Below Slab | | |
| DWG No. HH-PW-18 | | |
| DRAWN BY SJB | CHECKED BY AHR | |
| DATE Nov 2012 | SCALE 1:100 @ A4 | REV.No. D |

This junction detail has been assessed by H+H UK Ltd. for thermal performance based on various Celcon blocks and insulation combinations. Applicable Ψ-values and minimum temperature factors compatible with the latest Building Regulations can be found in our 'H+H Calculated Ψ-values' document, available to download from our website www.hhcelcon.co.uk.



| REV. | DATE. | DESCRIPTION. | BY. |
|------|---------|--|-----|
| D | 08/2023 | REFERENCES TO CONSTRUCTIVE AND REGISTERED CONSTRUCTION DETAILS REMOVED | SJB |
| C | 04/2021 | REFERENCE TO H+H CALCULATED Ψ-VALUES ADDED. MAX. CAVITY WIDTH REVISED | SJB |
| B | 11/2014 | MAX. FLOOR THICKNESS NOTE REMOVED. LABC REFERENCE ADDED. | SJB |
| A | 11/2013 | MAX. FLOOR THICKNESS NOTE ADDED | SJB |

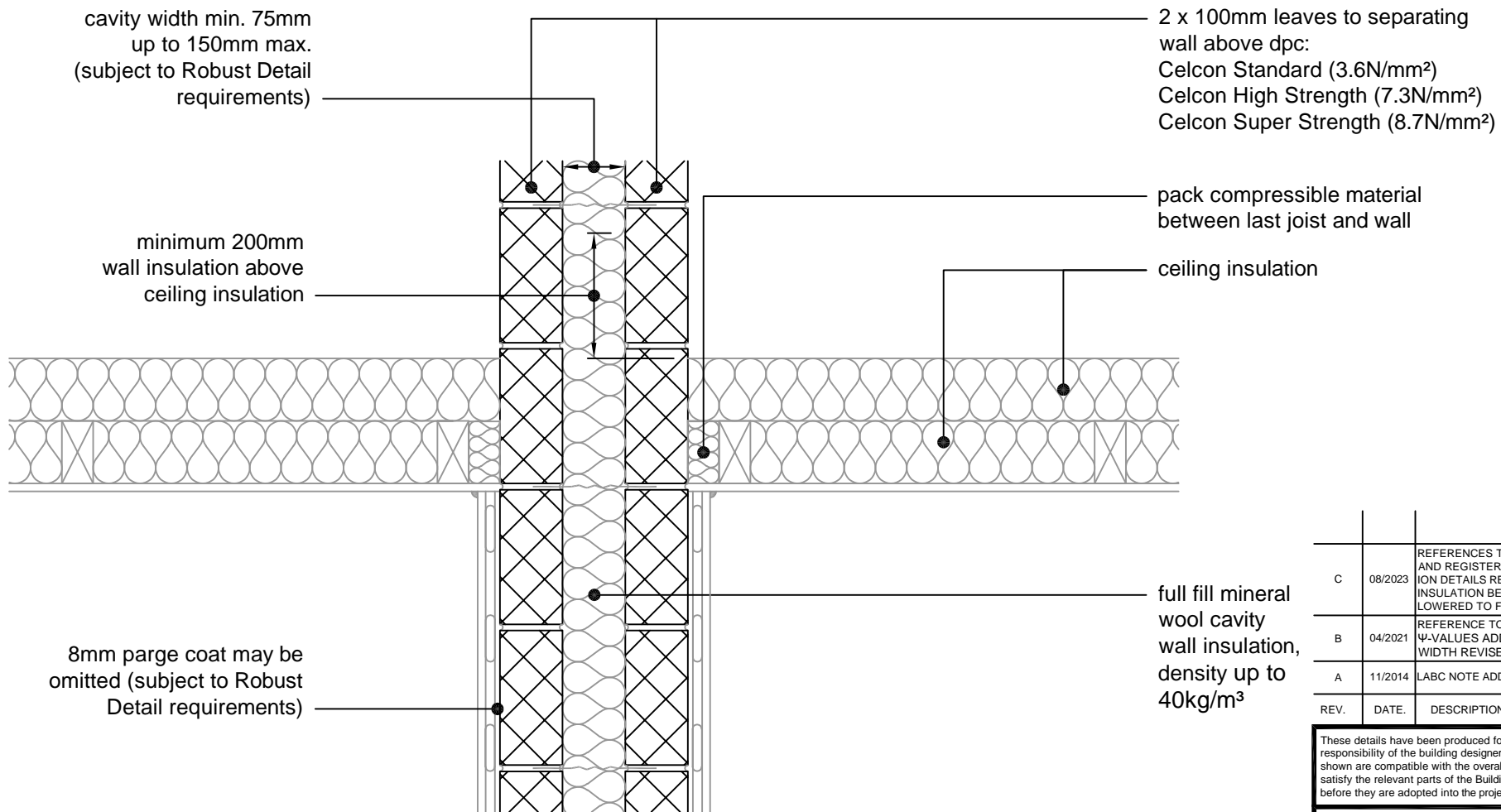
These details have been produced for guidance only. It is the responsibility of the building designer to ensure that the details shown are compatible with the overall building design and will satisfy the relevant parts of the Building Regulations applicable before they are adopted into the project design.

H+H PARTNERS IN WALL BUILDING

H+H UK Limited
 Technical Services Dept.
 Celcon House
 Ightham, Sevenoaks
 Kent, TN15 9HZ.
 Tel +44 (0)1732 880580
 Fax +44 (0)1732 887013
 Email tsd@hhcelcon.co.uk

| | | |
|--|------------------|-----------|
| TITLE Party Wall Masonry, Full Fill - In-situ Concrete Ground Bearing Floor, Insulation Below Slab | | |
| DWG No. HH-PW-19 | | |
| DRAWN BY SJB | CHECKED BY AHR | |
| DATE Nov 2012 | SCALE 1:100 @ A4 | REV.NO. D |

This junction detail has been assessed by H+H UK Ltd. for thermal performance based on various Celcon blocks and insulation combinations. Applicable Ψ-values and minimum temperature factors compatible with the latest Building Regulations can be found in our 'H+H Calculated Ψ-values' document, available to download from our website www.hhcelcon.co.uk.



cavity width min. 75mm
up to 150mm max.
(subject to Robust Detail
requirements)

minimum 200mm
wall insulation above
ceiling insulation

8mm parge coat may be
omitted (subject to Robust
Detail requirements)

2 x 100mm leaves to separating
wall above dpc:
Celcon Standard (3.6N/mm²)
Celcon High Strength (7.3N/mm²)
Celcon Super Strength (8.7N/mm²)

pack compressible material
between last joist and wall

ceiling insulation

full fill mineral
wool cavity
wall insulation,
density up to
40kg/m³

| REV. | DATE. | DESCRIPTION. | BY. |
|------|---------|--|-----|
| C | 08/2023 | REFERENCES TO CONSTRUCTIVE AND REGISTERED CONSTRUCTION DETAILS REMOVED. INSULATION BEHIND LAST JOISTS LOWERED TO FLUSH WITH JOISTS | SJB |
| B | 04/2021 | REFERENCE TO H+H CALCULATED Ψ-VALUES ADDED. MAX. CAVITY WIDTH REVISED | SJB |
| A | 11/2014 | LABC NOTE ADDED | SJB |

These details have been produced for guidance only. It is the responsibility of the building designer to ensure that the details shown are compatible with the overall building design and will satisfy the relevant parts of the Building Regulations applicable before they are adopted into the project design.



H+H UK Limited
Technical Services Dept.
Celcon House
Ightham, Sevenoaks
Kent, TN15 9HZ
Tel +44 (0)1732 880580
Fax +44 (0)1732 887013
Email tsd@hhcelcon.co.uk

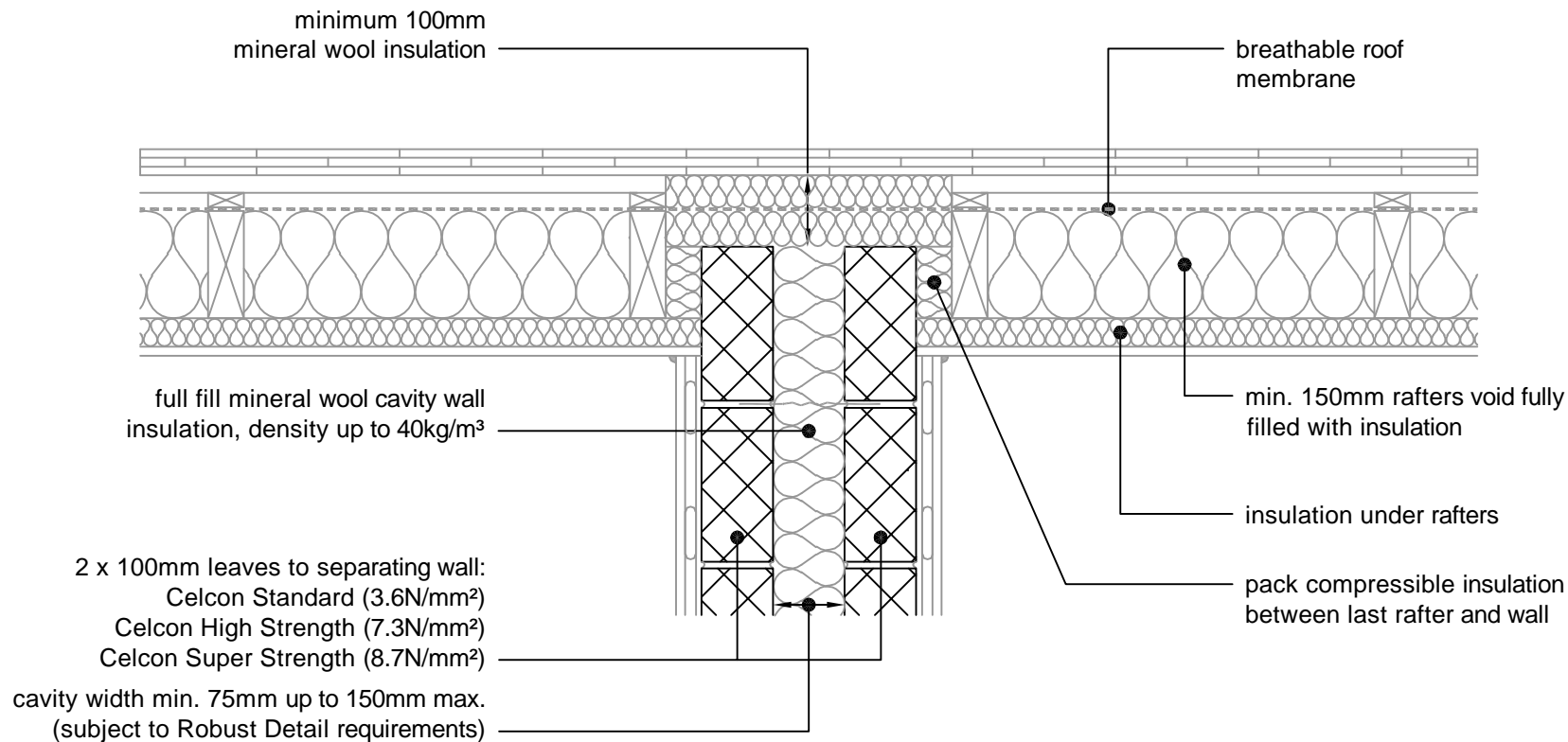
TITLE Party Wall Masonry, Full Fill -
Roof, Insulated At Ceiling Level,
Ventilated Loft

DWG No. HH-PW-20

DRAWN BY SJB CHECKED BY AHR

DATE Nov 2012 SCALE 1:100 @ A4 REV. NO. C

This junction detail has been assessed by H+H UK Ltd. for thermal performance based on various Celcon blocks and insulation combinations. Applicable Ψ-values and minimum temperature factors compatible with the latest Building Regulations can be found in our 'H+H Calculated Ψ-values' document, available to download from our website www.hhcelcon.co.uk.



| REV. | DATE | DESCRIPTION | BY. |
|------|---------|--|-----|
| D | 08/2023 | REFERENCES TO CONSTRUCTIVE AND REGISTERED CONSTRUCTION DETAILS REMOVED | SJB |
| C | 04/2021 | REFERENCE TO H+H CALCULATED Ψ-VALUES ADDED. PLASTERBOARD LAYER REMOVED. RAFTERS NOTES REVISED. MAX. CAVITY WIDTH | SJB |
| B | 11/2014 | LABC NOTE ADDED | SJB |
| A | 11/2013 | RAFTERS INSULATION THICKNESS NOTE ADDED | SJB |

These details have been produced for guidance only. It is the responsibility of the building designer to ensure that the details shown are compatible with the overall building design and will satisfy the relevant parts of the Building Regulations applicable before they are adopted into the project design.


H+H UK Limited
 Technical Services Dept.
 Celcon House
 Ightham, Sevenoaks
 Kent, TN15 9HZ
 Tel +44 (0)1732 880580
 Fax +44 (0)1732 887013
 Email tsd@hhcelcon.co.uk

| | | | |
|----------|------------|------------|---|
| TITLE | | | Party Wall Masonry, Full Fill - Roof, Insulated At Rafter Level, Unventilated Rafter Void |
| DWG No. | | | HH-PW-21 |
| DRAWN BY | | CHECKED BY | |
| SJB | | AHR | |
| DATE | SCALE | REV.NO. | |
| Nov 2012 | 1:100 @ A4 | D | |

This junction detail has been assessed by H+H UK Ltd. for thermal performance based on various Celcon blocks and insulation combinations. Applicable Ψ-values and minimum temperature factors compatible with the latest Building Regulations can be found in our 'H+H Calculated Ψ-values' document, available to download from our website www.hhcelcon.co.uk.